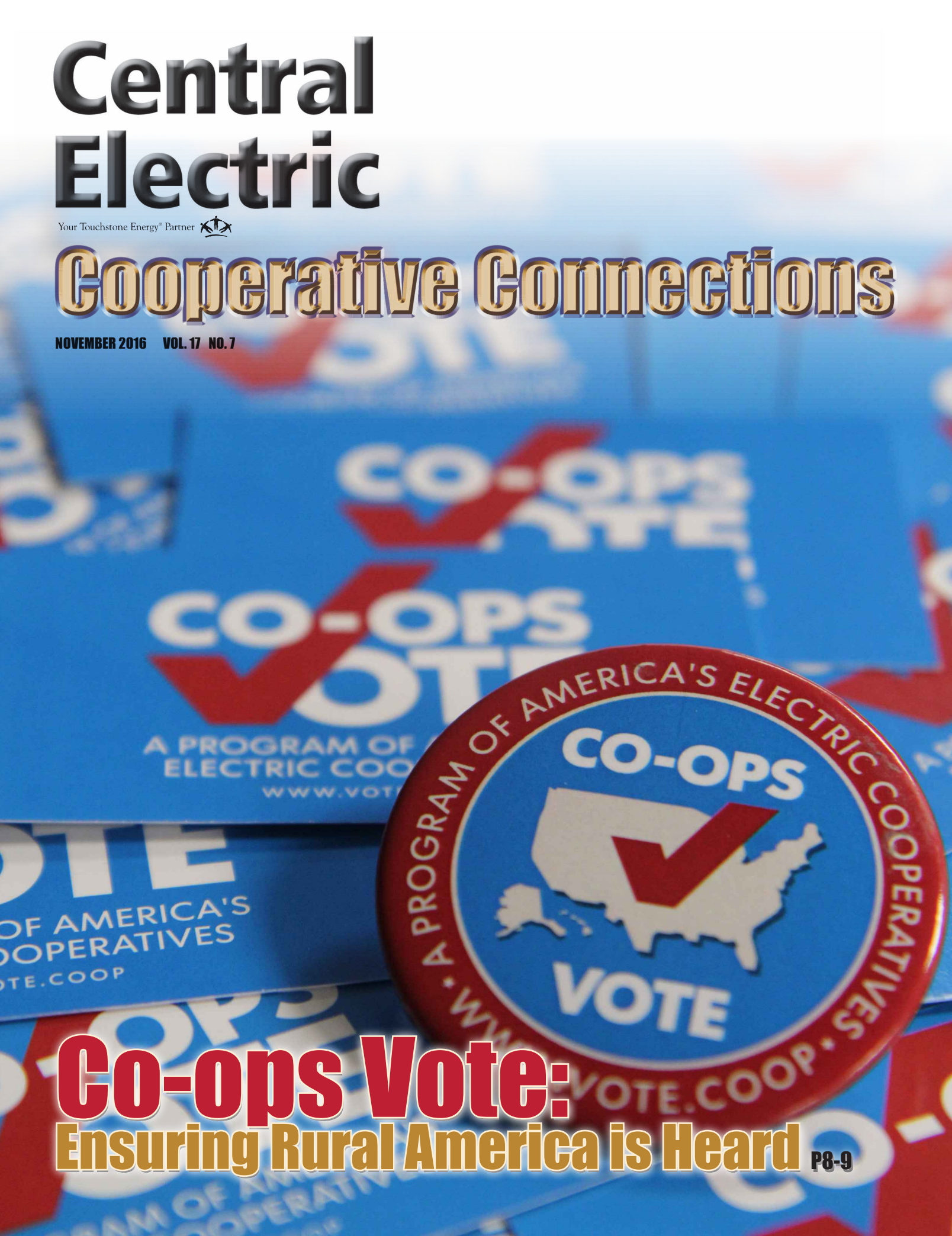


Central Electric

Your Touchstone Energy® Partner 

Cooperative Connections

NOVEMBER 2016 VOL. 17 NO. 7



Co-ops Vote: Ensuring Rural America is Heard

P8-9

Take Pride in Ownership



Ken Schlimgen
General Manager

Electricity is a critical need, but it takes more than poles, wires and kilowatt-hours to make a community.

In 1985, JoAnn and I were married. Together, we purchased a house in East 4th St in Mitchell and with the help of family and friends, we made several improvements over the next several years. Working together, we took great pride in what was our first home. While owning a home may not be for everyone, ownership does matter. It just seems to make sense that we treat things we own with greater care.

Chances are you probably don't think too often about your ownership role with Central Electric. Every member of Central Electric should take pride in the fact that you are an owner of your electric cooperative. While at times we take electricity for granted, your cooperative family is working 24 hours a day, 365 days a year to make sure you, the member-owners of the co-op, are well taken care of when it comes to your electricity needs.

Locally-based cooperatives have an obligation to be an integral part of the communities they serve. We at Central Electric understand that you can't sell electricity to a business that has closed its doors, or to people that have left because there are not enough local opportunities. Electricity is a critical need, but it takes more than poles, wires and

kilowatt-hours to make a community.

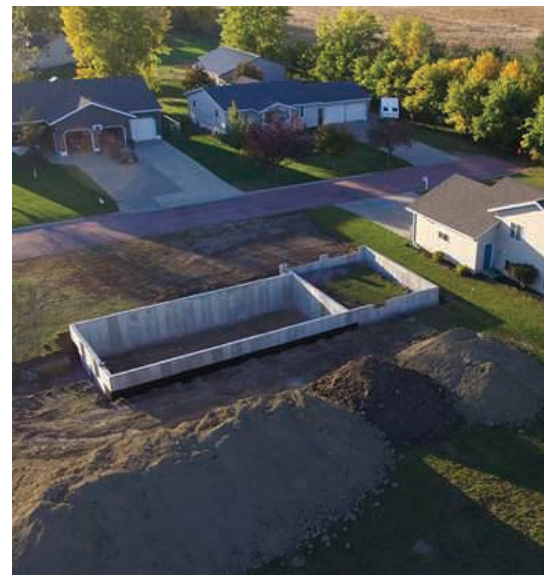
These are the reasons Central Electric goes the extra mile to help communities invest in themselves. So far this year, Central Electric has helped secure a funding package for a new health clinic and a new fire truck for the community of Woonsocket. In addition, we have helped the newly formed Mt. Vernon Economic Development Group start an affordable housing initiative. In addition, soon the Operation Round-Up Board of Trustees will be awarding funding for additional community projects.

Our communities are strong. Think about how much greater they can be when we work cooperatively to tackle our future challenges. If we act like owners on a consistent basis, we will put even more care and attention into our communities, and we will look locally for solutions. Finding local solutions can help keep money – and people – right here.

We all have a role to play. As your local electric cooperative, we promise to do our part. If you have thoughts about how we can do a better job or would like more information about the Operation Round-Up funds, please contact me or go to our website. You are the owners of the co-op, and we welcome your active participation.



General Manager Ken Schlimgen presents a check to the Woonsocket Town & Country Fire Department for a 0% loan through the REED Fund and Central Electric Cooperative.



An overhead view of the new home being constructed as part of the affordable housing initiative by the Mt. Vernon Economic Development group. Photo by Dave Anderson.

Central Electric Cooperative Connections

(USPS 018-963)

General Manager - Ken Schlingen

Managing Editor - Courtney J. Deinert
Assistant Editor - Patrick Soukup

President - Duane Wolbrink
Vice President - Todd VanWalleghen
Secretary - Bernetta Burghardt
Treasurer - James Headley

Central Electric Cooperative Connections is published monthly by Central Electric Cooperative PO Box 850, 25487 403rd Ave, Mitchell SD 57301. Families subscribe to Cooperative Connections as part of their electric cooperative membership. Central Electric Cooperative Connections purpose is to provide reliable, helpful information to electric cooperative members on matters pertaining to rural electrification and better rural living.

Subscription information: Electric cooperative members devote 25 cents from their monthly electric payments for a subscription. Nonmember subscriptions are available for \$12 annually. Periodical Postage Paid at Mitchell, SD 57301 and at additional mailing offices. POSTMASTER: Send address changes to Central Electric Cooperative Connections, PO Box 850, Mitchell SD 57301 TELEPHONE (605)996-7516 or 1-800-477-2892; FAX (605)996-0869; e-mail cec@centralec.coop. Design assistance by TDG Communications, Deadwood.

Office Hours
Monday through Friday,
8:00 a.m. to 4:30 p.m.

24 - Hour Service
1-605-996-7516 or
1-800-477-2892

www.centralec.coop



Mission Statement
Providing Reliable Energy and
Services at a Good Value

This institution is an equal
opportunity provider and
employer.

OFFICIAL NOTICE OF PUBLICATION
 STATEMENT OF OWNERSHIP, MANAGEMENT AND CIRCULATION
 (REQUIRED BY 39 U.S.C. 3685)

1. Publication Title: Central Electric Cooperative Connections
2. Publication No.: 018-963
3. Filing Date: September 26, 2016
4. Issue Frequency: Monthly
5. No. of Issues Published Annually: 12
6. Annual Subscription Price: \$6 for members \$12 Non members
7. Complete Mailing Address of Known Office of Publication:
25487 403rd Ave, Mitchell, SD 57301
8. Complete Mailing Address of Headquarters or General Business Office of Publisher:
25487 403rd Ave, Mitchell, SD 57301
9. Full Names and Complete Mailing Address of Publisher, Editor & Managing Editor:
 Publisher: Central Electric Cooperative, 25487 403rd Ave, Mitchell, SD 57301
 Editor: Courtney J. Deinert, Central Electric Cooperative, 25487 403rd Ave, Mitchell, SD 57301
 Managing Editor: Courtney J. Deinert, Central Electric Cooperative, 25487 403rd Ave, Mitchell, SD 57301
10. Owner: Central Electric Cooperative, 25487 403rd Ave, Mitchell, SD 57301
11. Known bondholders/mortgagees, and Other Security Holders Owning or Holding 1 Percent or More of Total Amount of Bonds, Mortgages, or Other Securities: US Dept of Ag, RUS, 1400 Independence Ave SW, Washington, D.C. 20250-1566; CFC, Woodland Park, 2201 Cooperative Way, Herndon, VI 22071.
12. Tax Status: Purpose, function and nonprofit status of this organization and the exempt status for federal income tax purposes: Has Not Changed During Preceding 12 Months

13. Publication Title: Central Electric Cooperative Connections

14. Issue Date of Circulation Below: Oct. 2016

15. Extent and Nature of Circulation	Avg. No. of Copies Each Issue During Preceding 12 Months	Single Issue Nearest to Filing Date
A. Total number of copies (net press run)	4904	4903
B. Paid and/or Requested Circulation		
1. Paid/Requested Outside County Mail Subscriptions	4865	4864
2. Paid In-County Subscriptions	0	0
3. Sales Through Dealers, Carriers, Street Vendors & Counter Sales	0	0
4. Other Classes Mailed Through the USPS	0	0
C. Total Paid and/or Requested Circulation	4865	4864
D. Free Distribution by Mail	234	233
E. Free Distribution Outside the Mail	0	0
F. Total Free Distribution	234	233
G. Total Distribution	5099	5097
H. Copies Not Distributed	20	20
I. Total	5117	5117
Percent Paid and/or Requested Circulation	95	95

Statement of Ownership, Management and Circulation as of October 1, 2016

OUR OFFICE WILL BE CLOSED ON
FRIDAY, NOVEMBER 11
IN OBSERVANCE OF VETERANS DAY.



Tricks, Treats and Safety Make Halloween a Scream!

It's the time of year to stock up on sweet treats and fill the yard and home with decorations as ghosts, goblins and caped crusaders plan their invasion of your neighborhood. Safe Electricity urges everyone to make sure your costumed visitors are kept safe by following some basic electrical safety guidelines.

Safe Electricity suggests the following to avoid potential safety hazards:

- Use only lights that have been safety tested and approved by Underwriters Laboratory (UL). Look for the UL label on the box and on each string.
- Make sure extension cords are in good condition. Use only UL-approved cords rated to carry the electrical load you will connect to them.
- Before plugging in the lights, check each string for broken sockets, frayed cords, or faulty plugs. Replace damaged strings.
- Keep electric cords out of high-traffic areas.
- Don't staple or nail through light strings or electrical cords.
- Fasten outdoor lights securely to trees, house walls, or other firm supports to protect the lights from wind damage. Use only insulated staples to hold light strings in place, not nails or tacks.
- Do not attach cords or lights to metal objects.
- Outdoors, use only lights and cords rated for outdoor use.
- Cords should be plugged into outlets equipped with ground fault circuit interrupters (GFCIs). Use a portable GFCI if your outdoor outlets don't have them. GFCIs protect you from electric shocks.
- Always unplug lights before going to bed or leaving your home.
- Do not run electrical cords across sidewalks or other walkway areas that could trip or endanger trick-or-treaters. Indoors, avoid stretching cords across a room where people or pets can trip over them or become entangled.

Whether decorating or using extension cords in general, read the label on both the cord and the appliances that are plugged into it to make sure the cord can handle the load. If it can't, use a higher-rated cord or unplug some appliances. Remember that extension cords are meant for temporary, not permanent, use.

A safe celebration is the best celebration and following basic electrical safety guidelines will help you avoid real scares and keep your memories "boo-tiful" and fun.

Source: safeelectricity.org

Kids' Corner Safety Poster

"Call before you dig."



Amy Cichosz, 9 years old

Amy is the daughter of Eric and Jill Cichosz, Spearfish, S.D. They are members of Butte Electric Cooperative, Newell, S.D.

Kids, send your drawing with an electrical safety tip to your local electric cooperative (address found on Page 3). If your poster is published, you'll receive a prize. All entries must include your name, age, mailing address and the names of your parents. Colored drawings are encouraged.

7,200 volts is nothing to tangle with.

Equipment is the primary source of horsepower on the farm. It's also tied to the greatest number of severe farm injuries. If equipment comes in contact with power lines, stay in the cab and call for help. Warn others to stay away. Put safety first and everything else second.



Crockpot Creations



Crockpot Corn

- 2 (16 oz.) bags frozen corn
- 8 oz. cream cheese, softened
- 1/4 cup melted butter
- 2 T. sugar
- 1 tsp. salt
- 1 tsp. pepper

Combine all ingredients in crockpot. Cook on HIGH setting for 2 hours or LOW for 4 hours.

Beverley Allbee, Woonsocket

Calico Beans

- 1-1/2 lbs. ground beef
- 1 lb. bacon, diced
- 1/2 cup chopped onion
- 1 can kidney beans
- 1 can pork and beans
- 1 can butter or lima beans
- 1/2 cup ketchup
- 3/4 cup brown sugar
- 2 T. mustard
- 1 T. vinegar

Brown ground beef, bacon and onion; drain. Combine all ingredients in crockpot. Cook on LOW for 6 to 8 hours.

Denene Miles, Doland

Crockpot Creamy Italian Chicken

- 1-1/2 lbs. chicken
- 1 pkg. Good Seasons Italian Dressing
- 1/4 to 1/2 cup water
- 8 oz. cream cheese
- 1 can cream of chicken soup
- 6 to 8 oz. sliced mushrooms
- Butter

Place chicken in crockpot. Mix Italian dressing and water together; pour over the chicken. Cook on HIGH for 4 hours or LOW for 8 hours. After the chicken is cooked, remove from pot and set aside. Mix cream cheese and chicken soup into the liquid that remains in the crockpot. Stir until melted and heated through. Shred chicken and add to cream sauce. Saute mushrooms in butter. Add to chicken mixture. Serve over rice or noodles.

Tracy Romey, Oelrichs

Crockpot Hash Brown Casserole

- 2 rings smoked sausage, cut into pieces
- 1 onion, chopped
- 1 bag frozen hash browns
- 2 cups shredded Cheddar cheese
- 2 cups cream of chicken soup

Place sausage in bottom of crockpot. Sprinkle with onions. Add hash browns. Spread soup over all. Sprinkle cheese on top. Cook on HIGH 2 hours.

Lynn Holzerland, Waubay

Butternut Squash and Apples

- 2 small butternut squash, peeled and cut into 1-1/2-inch chunks (about 8 cups)
- 2 apples, such as Braeburn or Gala, peeled, cored and cut into 1-inch chunks (about 4 cups)
- 1 large red onion, cut into 1-inch chunks
- 1/2 cup chicken broth
- 1/4 cup apple cider
- 1/4 cup firmly packed brown sugar
- 1/4 cup (1/2 stick) butter, melted
- 1 T. pumpkin pie spice
- 1 tsp. salt
- 1 tsp. thyme leaves
- 1/2 cup toasted flaked coconut

Place squash, apples and onion in slow cooker. Mix remaining ingredients except coconut in small bowl until well blended. Pour over squash mixture. Cover. Cook 3 to 4 hours on HIGH, stirring after 2 hours. Stir before serving. Sprinkle with toasted coconut. Makes 15 (2/3-cup) servings.

Nutritional Information Per Serving: Calories 116, Total Fat 4g, Cholesterol 8mg, Sodium 222mg, Carbohydrates 19g, Dietary Fiber 2g, Protein 1g

Pictured, Cooperative Connections

Crockpot Steak and Rice

- 1-1/2 lbs. round steak, cut into bite-size pieces
- Onion
- 1 can golden mushroom soup
- 1 can cream of chicken soup
- 1 can water
- 1 cup rice
- 2 T. soy sauce

Brown steak with a little onion. Mix soup and water in crockpot. Stir in rice and soy sauce; mix well. Stir in browned steak. Cook on LOW 8 to 10 hours. May be cooked in oven for 1-1/2 hours.

Shirley Miller, Winfred

Western Crockpot Omelet

- 1 (30 oz.) pkg. frozen hash browns, thawed
- 1 lb. ham, cubed
- 1-1/2 cups shredded Cheddar cheese
- 1 onion, chopped
- 1 green pepper, chopped
- 12 eggs
- 1 cup 2% milk
- 1 tsp. salt
- 1 tsp. pepper

Grease a 5-quart crockpot. Layer half of hash browns, ham, cheese, onion and green pepper. Repeat layers. Whisk together eggs, milk, salt and pepper. Pour over potato mixture. Cook on LOW, covered, for 6 to 7 hours until set. Turn off crockpot. Let stand uncovered 15 to 20 minutes.

Mary Jessen, Holabird

Please send your favorite holiday treat, soup and brunch recipes to your local electric cooperative (address found on Page 3). Each recipe printed will be entered into a drawing for a prize in December 2016. All entries must include your name, mailing address, telephone number and cooperative name.

Employee News at Your Coop

Welcome to Andrew Baier

Andrew Baier began with Central Electric on September 12th as the Materials Coordinator. He filled the position of Charles Boyd who recently retired.

Baier is originally from Armour, SD and attended Southeast Technical Institute in Sioux Falls. He graduated with an Associate's degree in architectural engineering. In Sioux Falls, he worked as a drafter, designer, and shop foreman at a residential cabinet shop. He recently celebrated his marriage to his wife Meagan, who works as a manager at Navigant Cymetrix in the Mitchell office.

Baier states, "What I'm looking forward to most about working at Central is moving back to the area and starting a new and exciting career with a larger and diverse company." Baier's hobbies include hunting, fishing, and taking his Harley out on the weekends.



Congratulations to Courtney Deinert

Courtney Deinert was promoted to Manager of Communications on October 1st. The Manager of Communications is a new position responsible for the growing cooperative needs of member communication, local outreach, and special projects such as Operation RoundUp, Coop Connections discounts, and youth programs. Deinert has been with the cooperative for two years and previously served as the Administrative/Communications Assistant.

The cooperative welcomes Heather Wieczorek from Stickney, SD as the new Administrative Assistant who will begin in October. See the next issue for more information on Heather.

October Years of Service

Don Patton

October 9
38 years

Heather Wieczorek

October 10
1st Day

Dwight Keegel

October 16
26 years

Jesse Baker

October 21
14 years

*Thank you for
all you do for the
cooperative and our
members!*



Operation RoundUp® Funds

DO YOU KNOW AN ORGANIZATION OR individual in need of funds for a special project?

Operation RoundUp funds will be distributed this December to worthy organizations or individuals in our service territory. **The application deadline is November 1, 2016.**

The program is intended to benefit people and organizations within the Central Electric service area. The funding will be focused to the following categories:

- Community Service
- Economic Development
- Education and Youth
- Environment
- Emergency Energy Assistance
- Disaster Relief

Applications can be found at www.centralec.coop or by contacting our office. The Operation RoundUp Board of Trustees will meet in November to review applications.

Thank you to our members who participate in Operation RoundUp and make this possible. Your donation makes a direct impact in keeping money local, cooperation among cooperative members, and growing our local communities.

**Final Call for Applications:
Deadline November 1, 2016**



HALLOWEEN HAZARDS

Halloween is the most festively frightening night of the year. But don't make yours fraught with danger. Here are some safety reminders:

- As you're decorating, make sure your parents check for cracked sockets, frayed, loose or bare wires, and loose connections.
- Fasten all outdoor lights securely to trees and other firm supports. Do not use nails or tacks that could puncture insulating cords and damage wires.
- Make sure decorative lighting is well-ventilated, protected from weather, and remains a safe distance from anything flammable like dry leaves and shrubs. Do not coil extension cords while in use or tuck under rugs or drapes.
- Make sure all outdoor electrical lights and decorations are plugged into an outlet protected with a ground fault circuit interrupter (GFCI). If your outlets aren't equipped with GFCIs, have an electrician install them or buy a GFCI adapter plug. Don't overload outlets with too many extension cords and strands of lights.
- Keep power cords off walkways and porches that trick-or-treaters may use. You don't want them to trip.
- Have mom or dad leave the porch light on for trick-or-treaters, and be sure to turn out all spooky lights and decorations before leaving home or going to bed. This will also save energy.



For more tips visit www.SafeElectricity.org.

Tackling the Decline in Rural Voting Through Co-ops **Vote**

By
Dan Riedinger

WITH ELECTION DAY QUICKLY APPROACHING, America's electric cooperatives continue to build momentum behind an innovative program to boost the political clout of rural America. Called Co-ops Vote, the non-partisan campaign has one simple goal: increase voter turnout at the polls this November.

In the 2012 elections, rural voter turnout dropped by 18 percent, twice the decline seen across the nation as a whole.

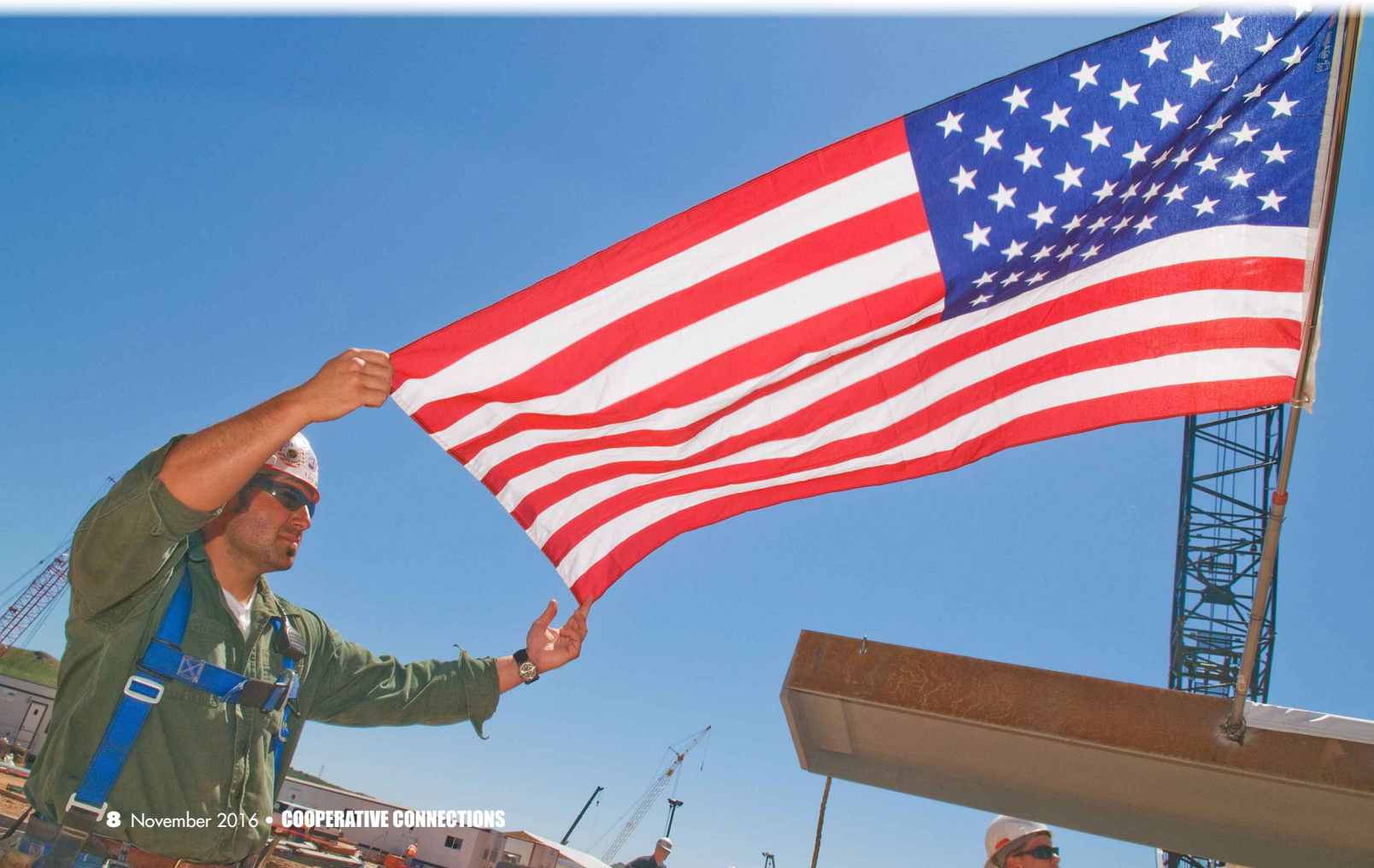
Electric co-ops are deeply rooted in their communities, and that decline raised an alarm. Concerned that the downward voting trend would continue, and could diminish the voice of rural America in future elections, co-ops sprung to action.

Participation in Co-ops Vote is strong. More

than 560 electric co-ops representing all the states in which co-ops operate are taking part in the effort. As of mid-August, 50 co-ops had achieved "5-star status," indicating they had undertaken at least five distinct program activities, such as hosting an employee engagement event or voter registration drive, building awareness of Co-ops Vote through newsletter articles, or promoting the campaign on social media.

Employees at West River Electric Association in Wall, S.D., have worked to ensure that members who stop by the office are registered to vote.

More than half a million people have seen news about Co-ops Vote through social media, and several thousand have taken the pledge to get out and



vote in this election.

“America’s electric cooperatives are leaders in the communities they serve throughout the country,” NRECA CEO Jim Matheson said.

“Co-ops Vote focuses elected leaders on the people who are most invested in the success of their own communities. With 42 million members in 47 states, electric co-ops are a powerful voice on national issues that have a local impact.”

Anyone can take the pledge online by visiting www.vote.coop. The website provides a variety of voter resources and information on key issues, such as the importance of rural economic development and the continuing need for safe, reliable and affordable electricity.

Support for the effort extends well beyond the co-op community. When the Kentucky Association of Electric Cooperatives launched its Co-ops Vote program, Kentucky Secretary of State Alison Lundergan Grimes gave it her endorsement. “As a commonwealth, we have work to do to increase voter turnout in all of our elections, especially in rural Kentucky where turnout is below the state average in almost every cycle,” she said. “I appreciate our electric cooperatives working hard to urge citizens in rural areas to vote in this important election year. I am excited to be a partner in their efforts as we continue to work to get more Kentuckians to the polls.”

Show your support for rural communities by joining co-op members across the country in casting your ballot on Nov. 8.

Dan Riedinger writes on consumer and cooperative affairs for the National Rural Electric Cooperative Association, the Arlington, Va.-based service arm of the nation’s 900-plus consumer-owned, not-for-profit electric cooperatives.

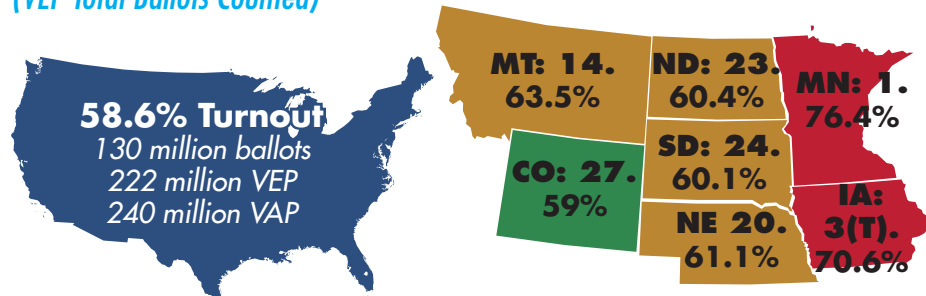


The maps below examine voter turnout in general elections since 2000 for South Dakota and surrounding states. The turnout is for Voting Eligible Population (VEP) total ballots counted, unless otherwise noted. VAP stands for Voting Age Population. The state’s overall ranking in terms of voter turnout is indicated on the top line.

Source: <http://www.electproject.org>

2012 General Election Turnout

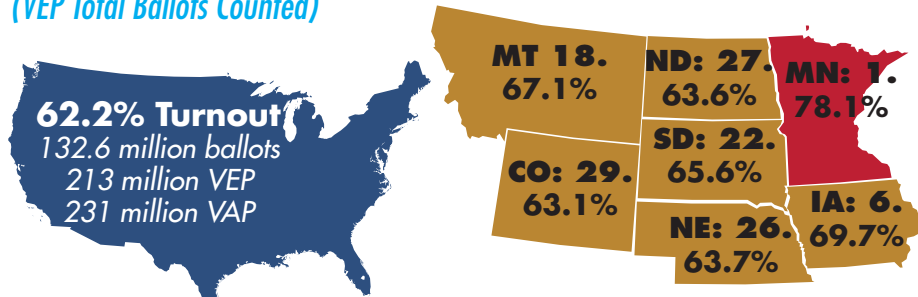
(VEP Total Ballots Counted)



https://docs.google.com/spreadsheets/d/1EYjW8l4y-5xPbkTFjdjdpnxOCgVvB8rM_oqjtJhtQKY/pubhtml

2008 General Election Turnout

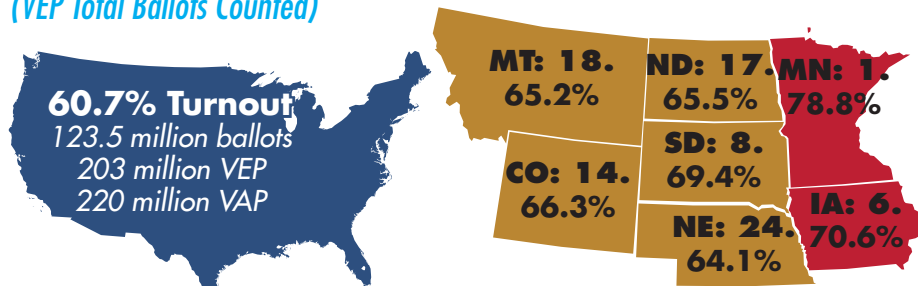
(VEP Total Ballots Counted)



https://docs.google.com/spreadsheets/d/1deCSqgLqrzFgpUa_S8Gk-8mKRpQ47pkx1eqKwZGtSqA/edit#gid=1424011440

2004 General Election Turnout

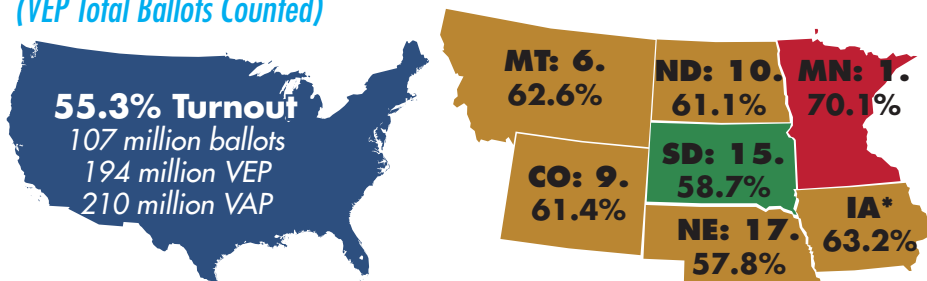
(VEP Total Ballots Counted)



<http://www.electproject.org/2004g>

2000 General Election Turnout

(VEP Total Ballots Counted)



<http://www.electproject.org/2000g>

*Iowa’s figure is for VEP for Highest Office, not VEP Total Ballots Counted

Pole Change-Outs Scheduled this Fall



Brian Bultje
Manager of Operations

UTILITY POLES ARE THE backbone of our distribution network. Inspections and pole replacements are necessary to ensure a reliable electric system. Members of Central Electric Cooperative will see crews completing pole change-outs beginning the week of October 3 through early December. Central

Electric Cooperative has contracted with Highline Construction from Paynesville, Minnesota to assist with the work. Central Electric has contracted with Highline Construction over the past ten years to assist with the cooperative's busy work schedule and manpower limitations.

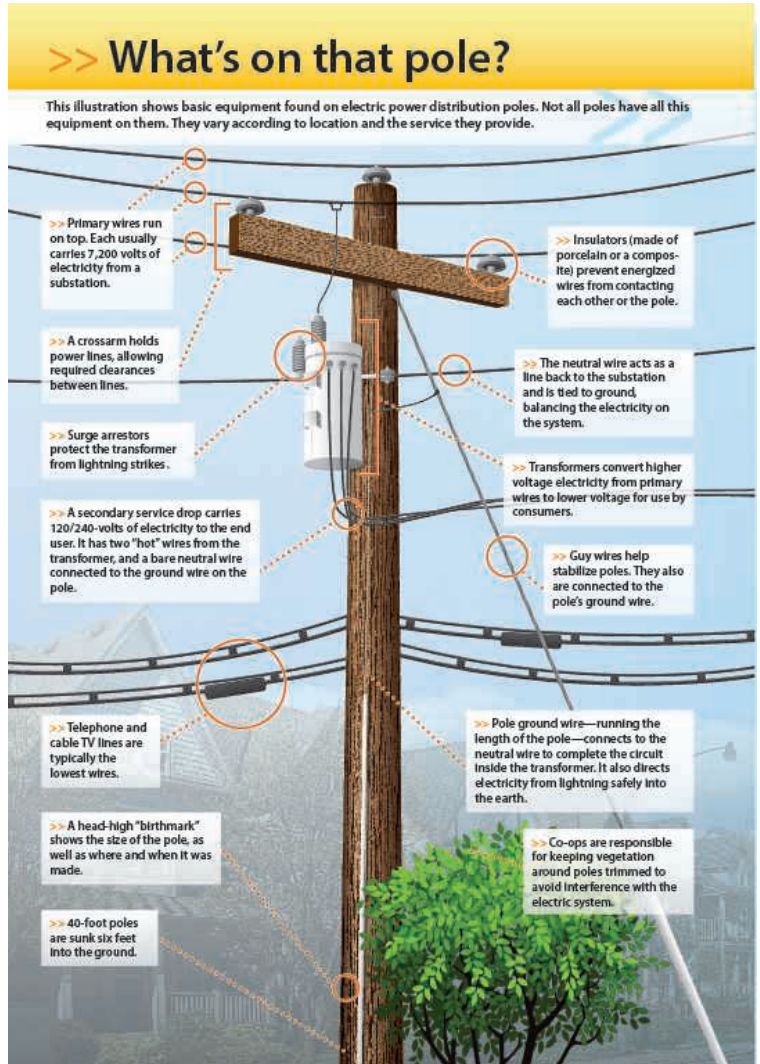
Highline Construction will operate in white trucks and equipment marked with the company name. They will operate from the Kimball outpost, but at times might ask to park equipment on member's property overnight. Central Electric thanks their members for their cooperation on this.

Approximately 180 poles need to be changed as a result from pole testing earlier this year. Occasionally, poles need to be replaced for other reasons besides decay and old age. Weather disasters, power line relocation and car crashes are potential causes for immediate replacement.

The areas of construction include the following:
1) Brule County townships: Union, Lyon, Plummer;
2) Buffalo County townships: Eldorado, Pershing, North Buffalo, Eden, Elvira, Crow Creek;
3) Jerauld County: Marlar, Crow Logan. Retired poles are offered to the landowners following the change-outs.

Here is a quick breakdown of how crews replace a utility pole:

When a pole needs to be replaced, crews will begin by untying lines from the current pole while energized. One crew member takes the lines back clear of the way with a bucket truck that has an insulated jib. Then another crew



member with the digger truck will pull out the old pole and dig the hole to fit the new, larger pole. The standard depth of the hole is 10 percent of the new pole's height plus two feet. The newly framed pole is then raised and guided carefully into position, and the crew shovels and tamps the dirt around it. The truck holding the energized wires will come back and retie them to the new pole.

Whenever possible, the crews complete pole change-outs while the line is energized to avoid disrupting electric service to our members. However, there could be situations where the cooperative needs to de-energize the line for the crew's safety. So, the next time you come across a crew replacing a pole, use caution and know that this process ensures a more reliable electric system for you, our members.

This November, let your **voice** be heard

LOW VOTER TURNOUT HAS BEEN A topic of conversation for the last several election cycles. Since the 1960s, voter turnout during presidential elections has seen a steady decline – with the occasional uptick here and there. In the 2016 primary election cycle, voter turnout in most states was only 21 to 30 percent, and this was a record year for primary voter turnout! In South Dakota, we saw a voter turnout of 21.94 percent.

Who you vote for isn't nearly as important as the fact that you do vote. Showing up at the polls sends the message that we are standing up for rural America.

Some speculate the reason for the decline is because the average American is not as engaged in politics as they have been in the past. And who can blame us really? Often times, we may feel like candidates are not speaking to the issues we care about. Or perhaps we don't feel like we understand enough about the candidates' stances on the issues, or even the issues themselves. But we can change this.

Here at Central Electric, we want to see civic engagement in our rural communities increase. We want to give you what you need to make informed decisions about candidates at all levels of government, not just the presidential race. And we want you to know more about the issues that could impact our local communities.


America's electric cooperatives are doing their part by informing co-op staff and members through Coops Vote, a non-partisan campaign with one simple goal: increase voter turnout at the polls this November. By visiting vote.coop, you can learn about your candidates, access voter registration information and more.

The future of rural economies depends on their ability to keep up with today's global economy. It's about key issues where we work and live like making our communities resilient against natural disasters, expanding broadband service and creating economic opportunities, and ensuring continued access to safe, reliable and affordable electricity.

Who you vote for isn't nearly as important as the fact that you do vote. Showing up at the polls sends the message that we are standing up for rural America.

We encourage you to visit vote.coop and take the pledge to learn more about the issues that impact us locally. Let's work together to improve our communities by increasing voter turnout and changing our country, one vote at a time.

I AM A CO-OP VOTER



CO-OPS VOTE

Visit vote.coop to learn how to become a Co-op Voter.

A PROGRAM OF AMERICA'S ELECTRIC COOPERATIVES

Along the Trail

South Dakota Leaders Line the Path

By
Brenda Kleinjan

IN A SEASON OF POLITICS IN A CITY BUILT AROUND politics, the South Dakota Trail of Governors emerges to bring the state's top leaders to life in bronze.

Since the placement of the first statues in 2012, the trail has brought to life the vision of two Pierre, S.D., businessmen – LeRoy Foster and Rick Jensen – who dreamed of creating a lasting legacy of South Dakota's governors. Combining a love of history with an appreciation of arts, the duo envisioned a concept to bring the state's past top leaders to life-size scale.

When completed, the trail of bronze statues will honor each of the state's governors for the enjoy-

ment and enlightenment of those living in and visiting South Dakota and its Capital city. The project is believed to be unique in its tribute to a state's governors. Rapid City has statues of U.S. Presidents throughout the downtown area of the city that is the gateway to Mount Rushmore.

The Trail of Governors Foundation to bring the vision for the statues to reality. Former governors' families who had been identified were notified so that work could begin on statues for those individuals. The foundation is still missing a few families and help is requested from anyone with clues on the governors, particularly former governors Charles H. Sheldon of Pierpont, Frank Byrne of Faulkton and



Biographies of Governors with Statues

William Bulow of Beresford.

As the project progresses, governors' families from across the United States share their personal stories of these South Dakota leaders. Foundation members and artists continue piecing together each governor's historical puzzle with details such as physical features, greatest accomplishments and favorite pastimes.

Among the South Dakota artists creating the sculptures are Lee Leuning, John Lopez, James Michael Maher and Sherri Treeby. The foundation's goal is to unveil three bronze statues each year beginning in 2012 and to complete 30 statues within 10 years. Plans are to continue commissioning statues as each future governor leaves office so the trail will wind its way through South Dakota's future. The governors guide visitors through Pierre's business district and around the state Capitol Complex.

Private donations fund each statue with a donor or donor group contributing \$72,000 for one governor.

Some of the depictions of the governors draw upon iconic connections the governor may have had with his place in the state's history and culture.

From his vantage point across the street of the state capitol, the state's 29th governor, Walter Dale Miller, holds a branding iron, signalling his western South Dakota ranching roots.

The state's first governor, Arthur Mellette stands on the lawn of the Hughes County Courthouse, gazing down historic Pierre Street to the banks of the Missouri River.

Gov. Bill Janklow who served a total of four terms as the state's 27th and 30th governor, brandishes a bull horn as he stares down the State's Department of Transportation.

The state's 18th governor, George T. Mikkelson, attired in a crisp suit of the 1940s, is caught mid-stride walking from the west side of the Capitol while his son George S. (governor No. 28) is on the opposite end of the capitol grounds with his hand outstretched in greeting.

On the lawn of the Governor's Mansion, governor No. 31 and now U.S. Senator M. Michael Rounds is depicted waiting the state's pheasant hunt with his dog at his side and a shotgun in his hands.

For more information on the Trail of Governors Foundation, please contact: Trail of Governor's Foundation, 1714 N. Lincoln, Pierre, SD 57501 or call 605-454-0689. You Can also find information online at www.trailofgovernors.com.

Opposite Page: Among the 19 South Dakota Governors memorialized with a statue along the Trail of Governors is Gov. George T. Mikkelson, who, on Feb. 26, 1947, signed the South Dakota Electric Cooperative Act.

Gov. Arthur Calvin Mellette

1st Governor of South Dakota
Years in Office: 1889-1893
Birth: June 23, 1842, Henry County, Ind.
Death: May 25, 1896, Pittsburg, Kan.

Gov. Charles Nelson Herreid

4th Governor of South Dakota
Years in Office: 1901-1905
Birth: Oct. 20, 1857, Madison, Wis.
Death: July 6, 1928, Aberdeen, S.D.

Gov. Robert Scadden Vessey

7th Governor of South Dakota
Years in Office: 1909-1913
Birth: May 16, 1858,
Winnebago County, Wis.
Death: Oct. 18, 1929, Pasadena, Calif.

Gov. Peter Norbeck

9th Governor of South Dakota
Years in Office: 1917-1921
Birth: Aug. 27, 1870, Clay County, S.D.
Death: Dec. 20, 1936, Redfield, S.D.

Gov. Warren Everett Green

13th Governor of South Dakota
Years in Office: 1931-1933
Birth: March 10, 1869,
Jackson County, Wis.
Death: April 27, 1945, Watertown, S.D.

Gov. Tom Berry

14th Governor of South Dakota
Years in Office: 1933-1937
Birth: April 23, 1879, Paddock, Neb.
Death: Oct. 30, 1951, Rapid City, S.D.

Gov. Leslie Jensen

15th Governor of South Dakota
Years in Office: 1937-1939
Birth: Sept. 15, 1892, Hot Springs, S.D.
Death: Dec. 14, 1964, Rapid City, S.D.

Gov. Harlan John Bushfield

16th Governor of South Dakota
Years in Office: 1939-1943
Birth: Aug. 6, 1882, Atlantic, Iowa
Death: Sept. 27, 1948, Miller, S.D.

Gov. George Theodore Mickelson

18th Governor of South Dakota
Years in Office: 1947-1951
Birth: July 23, 1903, Selby, S.D.
Death: Feb. 28, 1965, Sioux Falls, S.D.

Gov. Sigurd Anderson

19th Governor of South Dakota
Years in Office: 1951-1955
Birth: Jan. 22, 1904, Arendel, Norway
Death: Dec. 21, 1990, Webster, S.D.

Gov. Joe Foss

20th Governor of South Dakota
Years in Office: 1955-1959
Birth: April 17, 1915, Sioux Falls, S.D.
Death: Jan. 1, 2003, Scottsdale, Ariz.

Gov. Nils Andreas Boe

23rd Governor of South Dakota
Years in Office: 1965-1969
Birth: Sept. 10, 1913, Baltic, S.D.
Death: July 30, 1992, Sioux Falls, S.D.

Gov. Frank Leroy Farrar

24th Governor of South Dakota
Years in Office: 1969-1971
Birth: April 2, 1929, Britton, S.D.

Gov. Richard Francis Kneip

25th Governor of South Dakota
Years in Office: 1971-1978
Birth: Jan. 7, 1933, Tyler, Minn.
Death: March 9, 1987, Sioux Falls, S.D.

Gov. Harvey Lowell Wollman

26th Governor of South Dakota
Years in Office: 1978-1979
Birth: May 14, 1935, Frankfort, S.D.

Gov. William John "Bill" Janklow

27th and 30th Governor of South Dakota
Years in Office: 1979-1987 and 1995-2003
Birth: Sept. 13, 1939, Chicago, Illinois
Death: Jan. 12, 2012, Sioux Falls, S.D.

Gov. George Speaker Mickelson

28th Governor of South Dakota
Years in Office: 1987-1993
Birth: Jan. 31, 1941-Mobridge, S.D.
Death: April 19, 1993-near Dubuque, Iowa

Gov. Walter Dale Miller

29th Governor of South Dakota
Years in Office: 1993-1995
Birth: Oct. 5, 1925, Viewfield, S.D.
Death: Sept. 28, 2015, Dallas, Texas

Gov. Marion Michael "Mike" Rounds

31st Governor of South Dakota
Years in Office: 2003-2011
Birth: Oct. 24, 1954, Huron, S.D.

The Seasonal Switch



Patrick Soukup
Manager of Member Services & Marketing

WE ARE JUST A FEW weeks into autumn and many have already made the seasonal switch from cooling to heating their home. Not only do we bring out our favorite sweaters and pack away the summer gear, but our home and energy habits also need to adapt to the new season. Here are a few ways you can do that.

Update Your Thermostat

There are a lot of smart and programmable thermostats on the market.

The key to successful savings is to make sure the thermostat is working around your unique schedule. When leaving the home, set your thermostat to lower the heat a few degrees. Once you return or shortly before you return, allow the heating system to recover around 68 degrees F.

Drapes and Blinds

Contrary to summer time, allowing direct sunlight into a home during the cold months is beneficial. Take advantage of the day time sunlight to warm the south side of your home. At

night, close the drapes and blinds to create an extra barrier to prevent drafts.

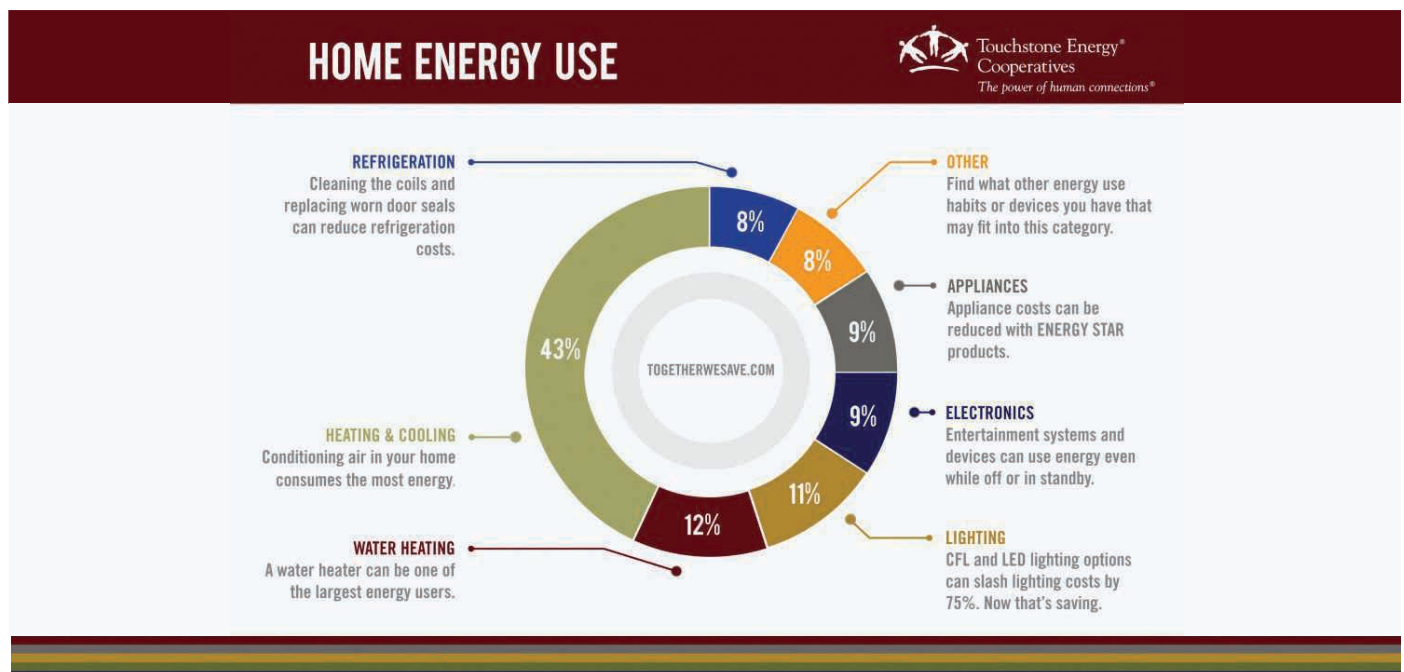
Doors and Windows

Wind and drafts are more common during the cold months. There's no better time than now to close holes, seals and gaps around exterior doors, windows, water spigots, dryer vents, telephone, electrical, cable penetrations, etc. Use a door threshold or sweep at the bottom to keep your heat from escaping. Make sure windows are locked and the outermost frame sealed from allowing cold air in.

Other Top Tips

- Plug electronic devices such as cable boxes, printers and TVs into power strips to turn off during vacations or long periods without use.
- Replace any light bulb, especially ones that burn more than one hour per day, with a light-emitting diode (led) bulb.
- Set water heater temperature no higher than 120°F.
- Use air-dry cycle instead of heat-dry cycle to dry dishes.
- Keep your garage door down. A warmer garage in the winter and cooler garage in the summer will save energy.
- Change HVAC filters monthly.
- Make sure the dryer vent hose is not kinked or clogged.

Use the home energy use chart below to see other areas where you can save.



Your **Coop** Services

Call the Energy Experts
for an in-home
Energy Audit

Found out how you can make your home
more energy efficient.



Level I Energy Audit \$175

Consists of Walk Through

Level II Energy Audit \$ 250

Consists of Walk Through & Full Home Pressure Test

**Ask about rebates for Central Electric
members after completing an energy audit!**

Fall Furnace Tune-Up Special

Furnace Tune-Up
\$95.00



Services Available for both Members & Non Members

Free Estimates
24 Hour Service
Licensed & Bonded
Financing Available
Workmanship Guaranteed



A Touchstone Energy® Cooperative

605-996-7516
1-800-477-2892
www.centralec.coop
25487 403rd Ave
Mitchell SD 57301

Regional Dateline

October 29

12th Annual Holiday Shopping Extravaganza
10 a.m. to 4 p.m.
Davison County Fairgrounds
Mitchell, SD, Contact Cindy at 605-996-8563

November 3-5

S.D. Local Foods Conference
Highland Conference Center
Mitchell, SD, 605-342-2180

November 5

DCS Fall Fling Vendor and Craft Fair, 10 a.m. to 2 p.m.
Dakota Christian School
Corsida, SD, Contact Val Hubers at 605-680-3573

November 11

Brown Family Concert, 7 p.m.
Dakota Christian School
Corsica, SD

November 12

RSVP Vendor & Craft Show
9 a.m. to 3 p.m., James Valley
Community Center
Mitchell, SD, 605-995-8440

November 18-19

Holiday Arts Christmas Craft Show, Friday 9 a.m. to 7 p.m.
Saturday 9 a.m. to 5 p.m.
Masonic Temple, Mitchell, SD
605-248-2526 or
nanvan@santel.net

November 18-January 8

Winter Wonderland, Falls Park
Sioux Falls, SD, 605-275-6060

November 22-December 26

Christmas at the Capitol
Pierre, SD, 605-773-3178



PHOTO COURTESY OF CHAD COPRESS, S.D. TOURISM

To have your event listed on this page, send complete information, including date, event, place and contact to your local electric cooperative. Include your name, address and daytime telephone number. Information must be submitted at least eight weeks prior to your event. Please call ahead to confirm date, time and location of event.

Events of Special Note

October 21-23

Autumn Festival, An Arts & Crafts Affair, Sioux Falls, SD
402-331-2889

October 22

Ducks Unlimited Banquet and Auction, 6 p.m. social hour
7 p.m. supper, 8 p.m. live and silent auction
American Legion Hall
Wessington Springs, SD

November 25-26 and December 10, 17-18, 22-23

1880 Train Holiday Express
Hill City, SD, 605-574-2222

November 26

I Love the '90s, Sioux Falls, SD
605-367-7288

November 26

Holiday Celebration and Winter Market, Rapid City, SD
605-716-7979

December 2-3

Living Christmas Tree
Aberdeen, SD, 605-229-6349

December 2-3, 8-10, 15-17

Strawbale Winery Twilight Flights 2016, Renner, SD
605-543-5071

December 3

Holy Rocka Rollaz Christmas Concerts, Watertown, SD
605-882-3877

December 3

Santa Visits, 10:30 a.m.
Senior Community Center
Wessington Springs, SD
605-539-1929

December 3

Springs Area Community Club Chili & Pie Feed
11 a.m. to 1 p.m.
Senior Community Center
Wessington Springs, SD
605-539-1929

December 9

Christmas at the Courthouse, 1 to 4 p.m.
Jerauld County Courthouse
Wessington Springs, SD
605-539-1221

December 10

Annual PEO Sweet & Treats Sale, 10 a.m. to 12 p.m.
Our Savior's Lutheran Church
Wessington Springs, SD
605-539-1324

December 10

Tour of Homes, 1 to 5 p.m.
Shakespeare Garden
Wessington Springs, SD
605-539-1529

December 15

Afternoon Tea at the Cottage featuring Christmas on the Prairie, 3 to 4:15 p.m.
Shakespeare Garden
Wessington Springs, SD
Reservations only
605-539-1169

December 15-March 31

South Dakota Snowmobile Trails Season, Lead, SD
605-584-3896

January 12-14

16th Annual Ice Fishing Tournament, Mobridge, SD
605-845-2500

January 19-21

Snowmobile Rally
Deadwood, SD, 605-578-1876