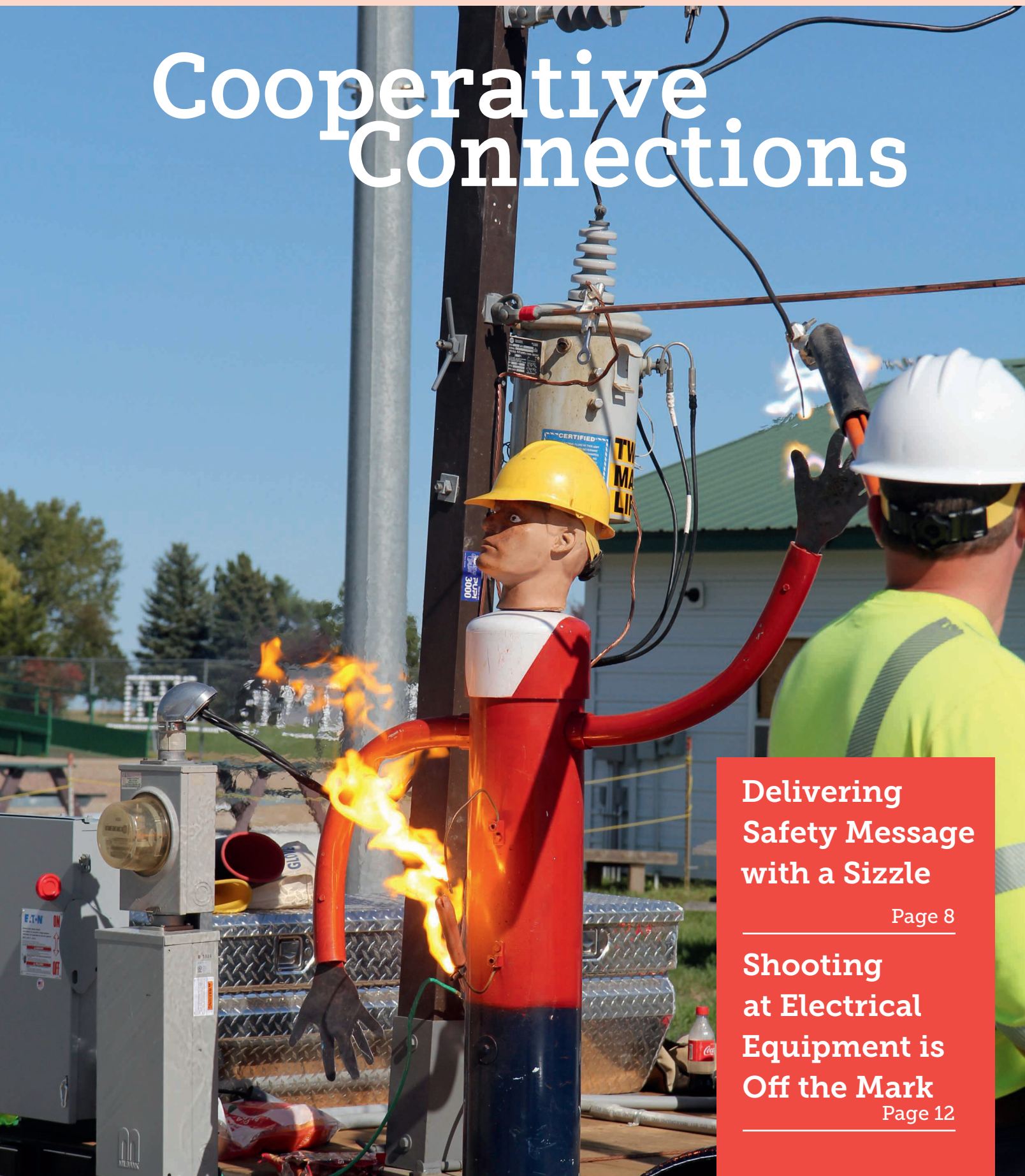


## Cooperative Connections



**Delivering  
Safety Message  
with a Sizzle**

Page 8

**Shooting  
at Electrical  
Equipment is  
Off the Mark**

Page 12

# Counting Blessings and Giving Thanks



**Ken Schlimgen**

General Manager

**Pray for those families  
who have an empty  
seat at the table  
this Thanksgiving  
with a loved one still  
stationed in harm's way.**

November is a time of year for reflection and giving thanks. Despite the many challenges that we have seen in 2019, we have many things to be thankful for.

Earlier this year, your cooperative was impacted by severe weather causing numerous power outages across our system. In a very short timeframe, there were three neighboring cooperatives helping to restore power. Your cooperative is blessed to receive and give help so that electric cooperative members get electric service restored as quickly as possible.

Through this system of mutual aid, we coordinate with other co-ops to bring additional trucks, equipment and manpower to our area. We work together and share resources in order to restore power to our community. When electric co-ops collaborate, we strengthen each other and the communities we serve – and that is something in which to be truly thankful.

Your cooperative is blessed to have a wonderful board of directors, a dedicated team of employees and a membership that supports their cooperative in providing reliable electric service. It takes time to understand and appreciate the cooperative business model and the seven cooperative principals, but it is the best model in the world.

We are blessed with reliable, low cost electricity provided by East River, Basin Electric, and the Western Area Power Administration. Each of these organizations work hard to make sure we have electric power at the flip of a switch today and tomorrow.

We are thankful that our employees come home safely every night to their families. Your cooperative has a culture of safety and wellness that emphasizes that we are all responsible for our safety and the safety of others. Safety will continue to be a primary concern for us. As you prepare for winter, please look over your electrical cords and equipment. If they show signs of wear, please have it repaired or replaced. Do your part to prevent accidents.

I have been blessed with the opportunity to travel to different parts of our country for work and pleasure. I always feel fortunate when I arrive back home. Our small part of the world has its challenges, but I wouldn't live anywhere else.

We should not forget to offer our thanks for the men and women in uniform for their many sacrifices. Pray for those families who have an empty seat at the table this Thanksgiving with a loved one still stationed in harm's way.

As we come together in our communities, in our homes and around our tables, let us all give thanks to each other and appreciate the blessings that have been extended to us and our families. Enjoy this Thanksgiving holiday meal with your families and friends – but remember to do so safely. We expect everyone to make the right decisions. Be safe on the roads. Don't take unnecessary risks, and above all, be aware of your surroundings at all times. We want everyone back safe and sound after the holidays.

God bless you and your families during the holiday season.

Until Next Month, Be Safe.





A Touchstone Energy® Cooperative 

(USPS 018-963)

### Board of Directors

Duane Wolbrink - President  
 Todd VanWalleghen - Vice President  
 Bernetta Burghardt - Secretary  
 Mark Reindl - Treasurer  
 Mark Hofer - NRECA  
 Roger Campbell  
 Donita Loudner - SDREA  
 Darwin "Butch" Morrison  
 Jim Headley

**General Manager:** Ken Schlimgen

**Editor:** Courtney J. Deinert -  
 courtneyd@centralec.coop

**Assistant Editor:** Patrick Soukup

CENTRAL ELECTRIC COOPERATIVE CONNECTIONS is the monthly publication for the members of Central Electric Cooperative, PO Box 850, Mitchell, SD 57301. Families subscribe to Cooperative Connections as part of their electric cooperative membership. Central Electric Cooperative Connections' purpose is to provide reliable, helpful information to electric cooperative members on matters pertaining to their cooperative and living better with electricity. Also available at [www.centralec.coop](http://www.centralec.coop).

This cooperative is an equal opportunity provider, employer and lender. If you wish to file a Civil Rights program complaint of discrimination, complete the USDA Program Discrimination Complaint Form, found on-line at [http://www.ascr.usda.gov/complaint\\_filing\\_cust.html](http://www.ascr.usda.gov/complaint_filing_cust.html), or at any USDA office, or call (866) 632-9992 to request the form. You may also write a letter containing all of the information requested in the form. Send your completed complaint form or letter by mail to U.S. Department of Agriculture, Director, Office of Adjudication, 1400 Independence Ave, S.W., Washington, D.C. 20250-9410, by fax (202 690-7442) or e-mail at [program.intake@usda.gov](mailto:program.intake@usda.gov).

Subscription information: Central Electric Cooperative members devote 50 cents from their monthly electric payments for a subscription. Non-member subscriptions are available for \$12 annually. Periodicals Postage Paid at Central Electric Cooperative, PO Box 850, Mitchell, SD 57301, and at additional mailing offices.

Postmaster: Please send address changes to Central Electric Cooperative, PO Box 850, Mitchell, SD 57301. Address all other correspondence to: Cooperative Connections, PO Box 850, Mitchell, SD 57301 Telephone: (605)996-7516; Fax: (605) 996-0869; e-mail: [cec@centralec.coop](mailto:cec@centralec.coop); website: [www.centralec.coop](http://www.centralec.coop).

### Office Information

M-F 8:00 a.m. - 4:30 p.m.  
 800-477-2892 or  
 605-996-7516  
[www.centralec.coop](http://www.centralec.coop)



### Mission Statement

Provide Reliable Energy & Services  
 with a Commitment to Safety and  
 Member Satisfaction

### OFFICIAL NOTICE OF PUBLICATION STATEMENT OF OWNERSHIP, MANAGEMENT AND CIRCULATION (REQUIRED BY 39 U.S.C. 3685)

1. Publication Title: Central Electric Cooperative Connections
2. Publication No.: 018-963
3. Filing Date: September 20, 2019
4. Issue Frequency: Monthly
5. No. of Issues Published Annually: 12
6. Annual Subscription Price: \$6 for members; \$12 Non members
7. Complete Mailing Address of Known Office of Publication: 25487 403rd Ave, Mitchell, SD 57301
8. Complete Mailing Address of Headquarters or General Business Office of Publisher: 25487 403rd Ave, Mitchell, SD 57301
9. Full Names and Complete Mailing Address of Publisher, Editor & Managing Editor:  
 Publisher: Central Electric Cooperative, 25487 403rd Ave, Mitchell, SD 57301  
 Editor: Courtney J. Deinert, Central Electric Cooperative, 25487 403rd Ave, Mitchell, SD 57301  
 Managing Editor: Courtney J. Deinert, Central Electric Cooperative, 25487 403rd Ave, Mitchell, SD 57301
10. Owner: Central Electric Cooperative, 25487 403rd Ave, Mitchell, SD 57301
11. Known bondholders/mortgagees, and Other Security Holders Owning or Holding 1 Percent or More of Total  
 Amount of Bonds, Mortgages, or Other Securities: US Dept of Ag, RUS, 1400 Independence Ave SW, Washington, D.C. 20250-1566; CFC, Woodland Park, 2201 Cooperative Way, Herndon, VI, 22071.
12. Tax Status: Purpose, function and nonprofit status of this organization and the exempt status for federal income tax purposes: Has Not Changed During Preceding 12 Months
13. Publication Title: Central Electric Cooperative Connections
14. Issue Date of Circulation Below: Oct. 2019

15. Extent and Nature of Circulation	Avg. No. of Copies Each Issue Previous 12 months	Single Issue Nearest to Filing Date
A. Total number of copies (net press run)	4828	4803
B. Paid and/or Requested Circulation (mailed outside county)	4575	4550
C. Total Paid and/or Requested	4575	4550
D. Free Distribution by Mail/Outside Mail	215	215
E. Total Free or Nominal (outside-county copies)	215	215
F. Total Distribution	4808	4783
G. Copies Not Distributed	20	20
H. Total	1828	4803
I. Percent Paid/Requested	95%	95%

## Employee Years of Service

**Dean Uher**

November 5 - 1 year

**Tim Neises**

November 19 - 40 years

**Thank you for your service to the cooperative!**

## Office Closed November 11

Our office will be closed on Monday, November 11 in observance of Veterans Day.

## Office Closed November 28

Our office will be closed on Thursday, November 28 for Thanksgiving and resume normal business hours on Friday.



# Electrical Safety Tips to Help Protect Homes and Businesses

Every year, electrical equipment, wiring, appliances and tools cause injuries and fires at both homes and workplaces.

Paying close attention to the condition of electrical equipment and taking appropriate and prompt action to correct electrical problems can help to ensure your safety and the safety of those around you.

Below are guidelines to help identify and reduce electrical hazards.

### Electrical Outlet Safety

- Avoid overloading outlets with too many appliances, and ensure that electrical loads are appropriate for the circuits.
- Unplug appliances when they are not in use to conserve energy, as well as minimize the opportunities for electric shock or fire.
- Use outlets instead of relying on extension cords and power strips. Consider having additional permanent outlets installed where needed.
- Use Ground Fault Circuit Interrupters (GFCIs) in wet/damp areas like kitchens, bathrooms and outdoors.

### Electrical Cord Safety

- Inspect electrical cords to ensure that they are not frayed, cracked or damaged.
- Do not place electrical cords in high traffic areas, under carpets, or across doorways where they pose a potential tripping hazard or could be easily damaged.

### Certification and Awareness

- Ensure that all electrical products and equipment are certified by a nationally recognized testing laboratory, such as Underwriters Laboratories (UL), and read the manufacturer's instructions carefully.
- Allow only trained and qualified electrical workers to perform work on electrical equipment.
- Be aware of signs of electrical problems such as flickering lights and/or buzzing, sizzling or humming sounds from electrical systems.

Source: [acadiainsurance.com](http://acadiainsurance.com)



## KIDS CORNER SAFETY POSTER



**"Never jerk cords out of the outlets; grip the plug only."**

**Traci Tschetter, 8 years old**

Traci is the daughter of Ryan and Elaine Tschetter, Revillo, S.D. They are members of Whetstone Valley Electric Cooperative, Milbank, S.D.

Kids, send your drawing with an electrical safety tip to your local electric cooperative (address found on Page 3). If your poster is published, you'll receive a prize. All entries must include your name, age, mailing address and the names of your parents. Colored drawings are encouraged.



# Slow Cooker Sensations

## Slow Cooker Egg Casserole

1 (32 oz.) bag frozen hash browns	1-1/2 cups shredded Cheddar cheese
1 lb. ham, cooked and cubed	12 eggs
1 onion, finely chopped	1 cup milk
1 green pepper, chopped	1/2 tsp. salt
1 T. olive oil	1/2 tsp. pepper

Spray inside of slow cooker with cooking spray. In a small frying pan, saute onion and green pepper in oil until tender. Cool 10 minutes. Place 1/3 frozen hash browns in slow cooker. Add 1/3 ham, onion and green pepper mixture and cheese. Repeat layers, ending with cheese. In large bowl, beat eggs, milk, salt and pepper until well blended. Pour over hash browns. Cook, covered, on LOW for 10 to 12 hours or overnight until casserole is set and eggs are thoroughly cooked. Serves 12.

Mary Jessen, Holabird, SD

## Cream Cheese Chicken Taquitos

2 boneless chicken breasts	8 oz. cream cheese
1 tsp. chili powder	1/3 cup water
1 tsp. garlic powder	1/2 cup shredded cheese
1 tsp. cumin	12 6-inch flour tortillas

Combine chicken, chili powder, garlic powder, cumin, cream cheese and water in slow cooker. Cover and cook on LOW for 8 hours or 4 hours on HIGH. Place 1/4 cup chicken mixture into each tortilla. Top with 1 to 2 T. shredded cheese. Roll tightly and place in a single layer on greased baking sheet. Bake at 400°F. for 10 minutes or until tortillas are slightly browned and cheese is melted.

Cortney Reedy, Tea, SD

## Pork Sausage and Rice

2 boxes Uncle Ben's Wild Rice	1 (8 oz.) can of mushrooms
1 lb. seasoned pork sausage	1 (10.5-oz.) can cream of mushroom soup

Prepare Uncle Ben's rice as directed. Brown pork sausage. Combine all ingredients in slow cooker. Cook on LOW for 3 to 4 hours.

Robert Bernhardt, Aberdeen, SD

## Slow Cookers Tamale Pie

2 lbs. lean ground beef	1 (4 oz.) can chopped green chiles
1 pkg. McCormick® Slow Cookers Chili Seasoning	1/2 cup water
2 (14.5 oz. each) cans stewed tomatoes, cut-up	<b>Topping:</b>
1 (14.5 oz.) can kidney or pinto beans, drained and rinsed	1 (8.5 oz.) box corn muffin mix
	1/2 cup shredded Cheddar cheese

Cook ground beef in large skillet on medium-high heat until no longer pink; drain. Place in slow cooker. Add Seasoning Mix, tomatoes, beans, chiles and water; mix well. Cover. Cook 8 hours on LOW or 4 hours on HIGH. For the Cornbread Topping, if using low setting, increase to HIGH. Prepare corn muffin batter as directed on package. Drop batter by spoonfuls on top of simmering chili. Cover. Cook 30 minutes longer or until toothpick inserted into center of cornbread topping comes out clean. Sprinkle with cheese. Makes 10 servings.

*Nutritional Information Per Serving: Calories 362, Total Fat 14g, Cholesterol 89mg, Sodium 9340mg, Protein 26g, Carbohydrates 33g, Dietary Fiber 4g*

**Pictured, Cooperative Connections**

## Mississippi Pot Roast

1 3 to 4 lb. chuck roast	1/4 cup butter
1 pkg. ranch dressing mix	4 to 5 pepperoncini peppers with some juice
1 pkg. au jus gravy mix	

Place roast in slow cooker. Sprinkle dressing mix and au jus mix on top. Place peppers on top of the mixes; add butter. Cook on LOW 8 hours. *Note: Do not add any water or broth to this. It will make enough liquid as it cooks.*

Jean Osterman, Wheaton, MN

Please send your favorite holiday, soup or brunch recipes to your local electric cooperative (address found on Page 3). Each recipe printed will be entered into a drawing for a prize in December 2019. All entries must include your name, mailing address, telephone number and cooperative name.

# THANKS TO LOCAL COOPERATIVES THE FUTURE LOOKS BRIGHT



*Whether it's teaching kids about electricity through our Co-ops in the Classroom program or awarding scholarships through the Touchstone Energy Scholar of the Week, your local electric cooperative is doing more to empower tomorrow's leaders.*

## RE-ENERGIZING THE NEXT GENERATION



## Corsica-Stickney Senior Sierra Heidinger Earns Scholarship Scholar of the Week

Sierra Heidinger has been named the Touchstone Energy Scholar of the Week for the week of September 22-28, 2019.

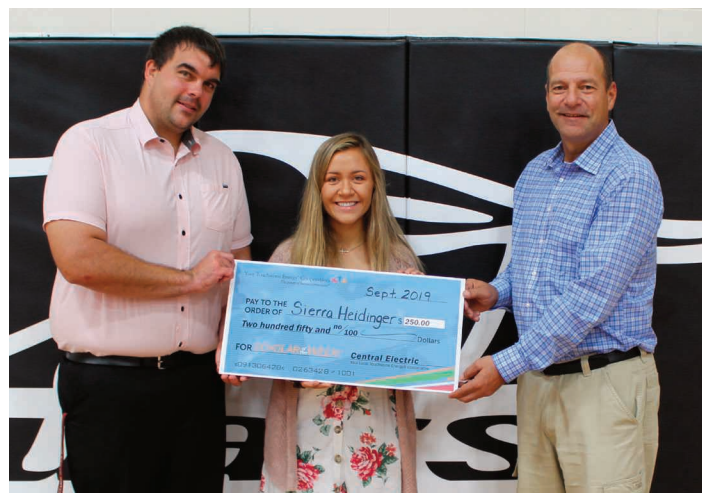
Heidinger is the daughter of Larry and Leanne Heidinger of Plankinton, SD, and is currently a senior at Corsica-Stickney High School.

In addition to her 4.1 GPA, Heidinger is involved in volleyball, football and basketball cheerleading, track, choir including All State Choir, band including the Augustana University band festival, student council, oral interpretation, National Honor Society, and FCCLA. She was nominated for this award by high school Principal Andrew Fergen.

Following graduation, Heidinger tentatively plans to attend the University of Sioux Falls and pursue a degree in Elementary Education.

Central Electric Cooperative awarded a \$250 scholarship to Heidinger. Central Electric Manager Ken Schlimgen visited Corsica-Stickney High School to recognize Heidinger and present the award. Heidinger was featured on KSFY TV news on Monday, September 23 and Tuesday, September 24. The interview can be found on KSFY.com.

The Scholar of the Week scholarship was created by KSFY and Touchstone Energy Cooperatives to recognize outstanding students across the state who set an example of hard work and



Principal Andrew Fergen (left) and General Manager Ken Schlimgen (right) present a scholarship check of \$250 to Sierra Heidinger (center) as Scholar of the Week

high academic standards. Area school principals and faculty nominate students for this award, based on excellence in the classroom, service in the community and extracurricular participation. The KSFY staff makes weekly selections throughout the school year from students across eastern South Dakota and southwestern Minnesota.



# Rodeo Student Athletes Honored

Central Electric Cooperative, as part of the Touchstone Energy® Cooperatives of South Dakota, awarded shirts to four local students for qualifying for the short go in the South Dakota High School Rodeo Association state finals this past summer.

The students honored included Mason Moody of Letcher, SD for bull riding and team roping; Kaitlyn Sandland of Mount Vernon, SD for goat tying; Ryan Bergeson of Mitchell, SD for team roping; and Traden Lockwood of Mitchell, SD for saddle bronc riding.

The short go consists of the 15 athletes who accumulated the most points in the first two rounds of the state finals plus qualifying points from the regional rodeos.

South Dakota's Touchstone Energy® Cooperatives are proud supporters of South Dakota High School Rodeo and support these student athletes as they embody the same values as Touchstone Energy®: innovation, integrity, accountability and commitment to community. Shirts were awarded to 140 short go qualifiers across the state.



Manager of Communications  
Courtney Deinert presents a shirt to  
Kaitlyn Sandland



Mason Moody takes a quick break  
between classes to pose with his  
qualifier shirt



**Know what's below.  
Call before you dig.**

## Local Discounts with your Co-op Connections® Card



Your cooperative membership earns you discounts at local participating businesses.

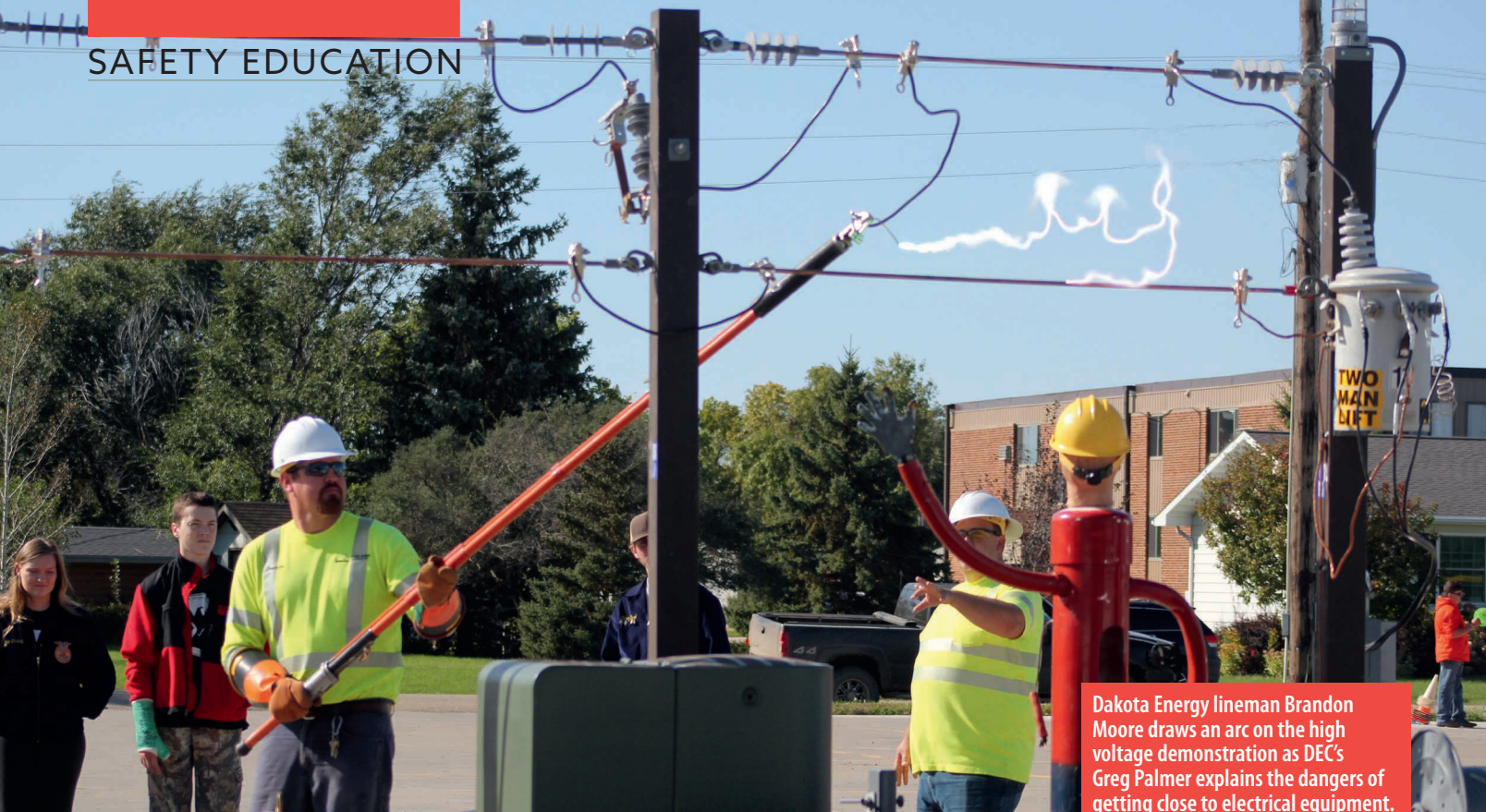
Simply show your Co-op Connections Discount Card and save.

- 1) **NAPA, Chamberlain, SD;**  
10% off non-sale items.
- 2) **New Leaf Body Spa, Mitchell, SD;**  
\$5 off a 60 minute massage.
- 3) **OnSight 24/7, Mitchell, SD;**  
10% off products and services.
- 4) **Photography Unlimited, Mitchell, SD;**  
Free session & 10% off your order.
- 5) **The Pin Cushion, Mitchell, SD;**  
Buy 1 Aurifil thread at regular price and get 2nd one at 50% off.
- 6) **Rob's Short Stop, Mitchell, SD;**  
Large nachos with chili and 16 oz fountain pop for \$2.99.
- 7) **Sun Gold Trophies, Inc., Mitchell, SD;**  
15% off storewide; some exclusions apply.
- 8) **Tessiers, Inc., Mitchell, SD;**  
10% discount on residential service or maintenance work only. Discount cannot be used in conjunction with any other discount or for commercial work or installations.

For a full list of ways to save, visit [www.connections.coop](http://www.connections.coop).

To request a card or become a participating business, visit [www.centraleco.coop](http://www.centraleco.coop) or call 800-477-2892 or 605-996-7516.





Dakota Energy lineman Brandon Moore draws an arc on the high voltage demonstration as DEC's Greg Palmer explains the dangers of getting close to electrical equipment.

# CO-OPS DELIVER SAFETY MESSAGE

## High Voltage Trailer Brings Safety Messages to Local Communities

**Brenda Kleinjan**

editor@sdrea.coop

The hum of electric current arcing can be heard split seconds before the eye registers the glowing arc on the wire and the flames shooting from the ends of a grapefruit attached to a human-like model of the rural electric cooperatives' high voltage demonstration trailer.

As the hum subsides and the gasps of Miller High School students dwindle, Dakota Energy Cooperative's Greg Palmer continues his explanation of electricity's need to find a path to ground.

"This will show you what would happen to your body

Moore shows the scorched insides of a grapefruit that had been used on the high voltage demonstration trailer.



Photos by Brenda Kleinjan/SDREA



**"This will show you what would happen to your body internally if you were to come in contact with 7,200 watts of electricity."**

internally if you were to come in contact with 7,200 volts of electricity," said Palmer, who works out of the Huron, S.D.-based cooperative's Miller office. Palmer, along with lineman Brandon Moore were part of the Miller High School FFA Chapter's Ag Safety Day in early October.

The duo used a newly constructed demonstration trailer used by South Dakota's electric cooperatives to deliver safety messages to student groups, community groups, fire departments and others across the state. The co-ops have been using one trailer for more than two decades and this fall added the second trailer to the safety fleet.

Moore continues the demonstration, draws an arc on the example power lines.

"Electricity travels at the speed of light – you can't just let go," explains Palmer. "You can't see it, you can't smell it. The only time you see it is when something bad is about to happen."

Moore removes the grapefruit from the demonstration trailer and cuts it in half.

With this grapefruit, it looks normal from the outside, you can see where the electricity went in and out. But when you cut it open, you see what it does to the inside of the body – it chars everything," Palmer explains.

"You've heard the same story before: don't climb on the green boxes, don't fly kites near power lines. But especially this time of year, be aware of where power lines and underground boxes are located," Palmer said.



Employees at Moreau-Grand Electric helped construct the state's second High Voltage Demonstration trailer used by South Dakota electric cooperatives.

Photo by Roger Lawien/Moreau-Grand

"This morning we changed a pole because someone ran into it with a (silage) chopper and broke it off," Palmer said.

Palmer went on to explain that if an accident like that happens and the power line comes in contact with the equipment or tractor, the best plan is to stay in the tractor or piece of equipment until the line can be de-energized.

For information about bringing this safety demonstration or other safety demonstrations to your school, community group or fire department, contact your local electric cooperative.



Miller High School students examine the insides of a hotdog held by Dakota Energy's Greg Palmer. The hotdog is used as an example of what an electrical contact can do to human muscle. On the Cover: Flames shoot out the ends of an energized hotdog as Brandon Moore guides an electrical current into the demonstration unit to show the impact an electric contact has on the human body.





The Sweep-VanDyke Railroad Museum & Cultural Center preserves the history of the railroad and those who passed through to help build the communities we have today. There is a piece of history for everyone!

# OPERATION ROUND-UP FUNDS AWARDED

## Plankinton Preservation Society

The Plankinton Preservation Society, Inc. received a grant for \$1,000 to support rehabilitation efforts at the Sweep-VanDyke Railroad Museum and Cultural Center located in Plankinton.

The grant funds were used to install historic era-specific lighting throughout the Museum and Cultural Center. In addition to the lighting, the Preservation Society and volunteers have been hard at work over the years restoring the floors, vintage tin ceilings, and most especially, the history through photos and donated artifacts.

“People may think of this as a Plankinton project, but it’s truly a South Dakota project. It’s Mitchell, Mount Vernon, White Lake, Kimball—it’s everything,” says President Gayle Van Genderen.

A tour through the project tells the story of the railroad and the many figures who have passed through to help build South Dakota. There is a piece of history for anyone for stops to visit the museum.

Upstairs in the former hotel, rooms have been adopted by different families and staged to meet chosen themes or honor historical figures.

For information on how to donate or get involved with the Rehabilitation Project, contact Gayle Van Genderen at 605-942-7770 or [sdmail@siouxvalley.net](mailto:sdmail@siouxvalley.net).



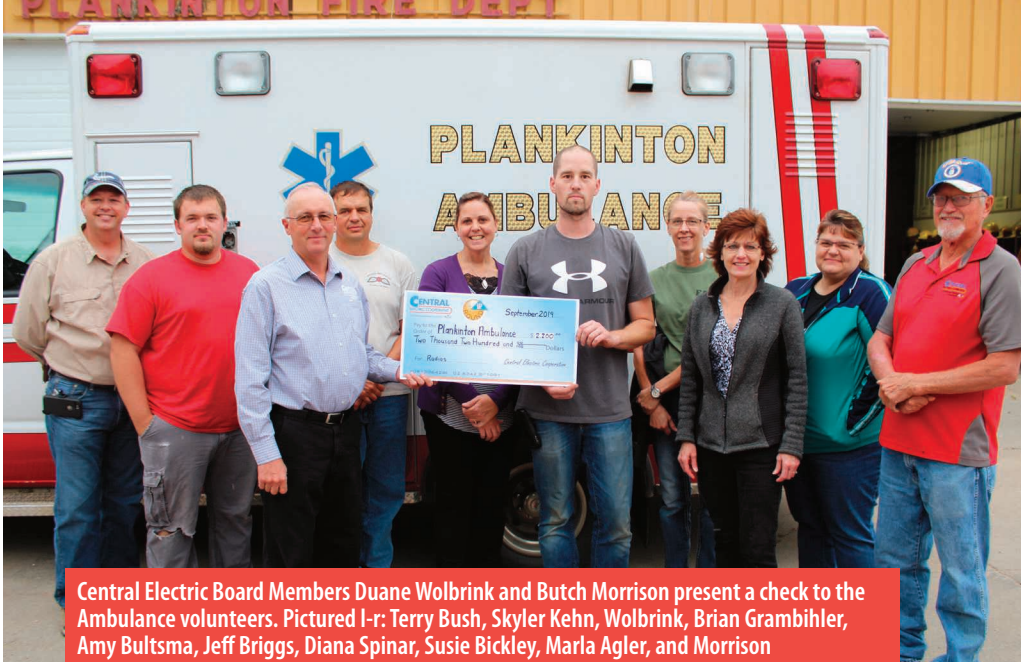
General Manager Ken Schlimgen (far right) awards a check to board members and volunteers (l. to r.) Jack Marette, Gayle Van Genderen, J.P. Studeny Jr., and Kathy Guindon. Board members not pictured: Rosalie Brink, Diana Spinar, and John Schmidt.

## Plankinton Ambulance Association

The Plankinton Ambulance Association received a grant for \$2,200 to purchase new handheld radios for the volunteers.

Technology evolves quickly and that includes equipment used by our first responders as well. The previous radios they carried were out of date and began having issues. The new radios will provide reliable communication and consistency among the volunteers.





Central Electric Board Members Duane Wolbrink and Butch Morrison present a check to the Ambulance volunteers. Pictured l-r: Terry Bush, Skyler Kehm, Wolbrink, Brian Grambihler, Amy Bultsma, Jeff Briggs, Diana Spinar, Susie Bickley, Marla Agler, and Morrison

"It is a benefit to our citizens as we are a volunteer service covering this area," stated Secretary/Treasurer Amy Bultsma. Volunteer services heavily rely on the support of their communities and citizens,

and this helps alleviate their needs.

The Plankinton Ambulance serves a population of approximately 970 people over 265 square miles and has also assisted neighboring departments when needed.

## Jerauld County Trap Club

The Jerauld County Trap Club received a grant for \$2,000 for youth ear protection.

The Jerauld County Trap Club provides the HuntSafe course free of charge for the surrounding area, which is a required course for anyone under the age of 18 who would like to hunt. They also provide funding for clays, ammunition, course fees and safety items, such as the ear protection, for the Wessington Springs High School Clay Target Team. The new ear protection will allow instructors to communicate with the students while they wear it, which will greatly improve communication and safety.

"By providing a cost-free program, we can ensure that anyone that is interested can participate without financial burden," says Jason Weber. "This is aimed toward those that might be interested solely in firearm safety or those that will be lifelong outdoorsman."

The Wessington Springs High School Clay Target Team recently finished their second year with 10 students, including five who attended the state competition in Aberdeen and one who shot a perfect score.



Five members of the Wessington Springs HS Clay Target team attended the state competition. Pictured l-r: Volunteer Gene Gaikowski, Bryce Kopfmann, Luke Knipfer, Carter Gaikowski, Brock Stevens, Coach Scott Powers, and Austin Schimke

## Operation Round-Up Deadline Approaching

**The next application deadline for Operation Round-Up funds is November 1, 2019.**

Funds will be awarded shortly after the deadline to organizations or individuals in our local communities.

Operation Round-Up is intended to benefit people and organizations within the Central Electric service area. The funding is focused on impacting the following categories:

- Community Service
- Environment
- Economic Development
- Disaster Relief
- Emergency Energy Assistance
- Education and Youth

Applications can be found at [www.centralelec.coop](http://www.centralelec.coop) or by contacting our office.

Thank you to our members who participate in Operation Round-Up and make this possible. **Since the program's initiation in 2015, our members have invested over \$84,500 back into our local communities!** Your donation makes a direct impact in keeping money local and growing our communities.

The average donation per member is \$6.00 per year. To sign up for Operation Round-Up, visit [www.centralelec.coop](http://www.centralelec.coop) or contact our office.



# Don't Shoot!

## Vandals and Errant Shots Wreak Havoc with Equipment

**Brenda Kleinjan**

editor@sdrea.coop

**"You get really cold weather and the line tightens up and that's when you'll see those weak spots break."**

With fall comes an increase of outdoor hunting activities.

One thing not on any responsible hunter's bag list is electrical equipment.

The irresponsible actions of those firing the shots can have costly – and untimely – consequences for electric cooperative members.

Shots fired at electric equipment can cause immediate, noticeable damage, often times causing for emergency, after-hours dispatch of crews to locate and repair the problem disrupting power to members.

Other times, the damage weakens a line or piece of equipment. Time, weather or storms can cause the weakened area to fail, likely at an inconvenient time for members.

"It never comes at a convenient time," said Dale Schwagel, line superintendent at Traverse Electric Cooperative in Wheaton, Minn., of when the damage occurs...and when past damage usually surfaces.

"You get really cold weather and the line tightens up and that's when you'll see



Fall decor at some South Dakota electric cooperatives carry an important safety reminder about not shooting at or near power lines.



Bullet holes caused by vandals riddle a co-op transformer.





Routers are being installed at Traverse Electric Cooperative in Wheaton, Minn., as part of a system-wide meter upgrade.

When vandals target power lines and electrical apparatus, system reliability is at stake.



A newly installed router at Traverse Electric Cooperative in Wheaton, Minn., was destroyed by a vandal's bullet, causing more than \$1,600 in damage.

those weak spots break," said Schwagel.

The co-op has been relatively vandal-free for the last several years.

However, this summer the co-op encountered damage to newly installed routers which are part of a system-wide meter upgrade.

Schwagel estimates the cost of the damage will total more than \$2,500 once labor is tacked on to replacing the \$1,600 piece of equipment.

"Shooting this piece of equipment is a cost to the co-op and the members. Ultimately that's where the costs go," said Schwagel.

If you see damage to co-op equipment, report it to the co-ops so repairs can be made.



# Preparing for Outages in Wet Conditions



**Patrick Soukup**

Manager of Member Services/Marketing

**Unfortunately, we could be facing the same wet conditions again next spring.**

The wet conditions have made it a difficult year for planting crops, keeping basements dry, completing construction projects, and more. Unfortunately, we could be facing the same wet conditions again next spring.

Please prepare your home and operation for an outage situation. We maintain our power equipment to maximize reliability. However, as we all know, Midwest weather can cause issues out of our control.

Additionally, outage restoration time could be delayed by the numerous road and bridge closures across our area.

During an outage, our primary focus is to safely restore power as quick as possible. However, our members likely have other responsibilities, including maintaining a household, livestock, or going to work and leaving home. To prepare, consider some of the following:

- **Purchase a sump pump battery back-up.** If you are relying on a sump pump to keep your basement dry, even a short outage can be an issue. A battery back-up can range from \$150 - \$500 or more. A visit to your hardware store can help you find one to meet your needs. Even having a replacement sump pump or a sump pump alarm is a good idea.
- **Install a generator.** This is a more expensive option. However, it can quickly pay for itself in certain situations or, at minimum, provide peace of mind. The size and price of the generator will depend on what you'd like to power during an outage, whether it be a few select appliances or the bulk of your household.
- **Exercise your generator.** If you do have a generator, make sure it's in good working condition. Check and purchase new oil, filters, and fuel. Also ensure that your generator will carry the load you want it to power in an outage.

Educate yourself on the dangers of "backfeeding" power and carbon monoxide poisoning to keep you and your family safe.

If you have any questions, give our office or your local electrician a call. Making preparations will make your life much easier, and easier on your family, in case of any issues.

Road and bridge closures could delay crews during outage restoration this upcoming fall, winter and spring.





When the power goes out,  
you go on.

**KOHLER** Generators



## How much will it cost?

When shopping standby home generators, your cost will vary based upon home size and what you'd like to power during an outage. Our team will walk you through these details and provide you with a personalized quote—no strings attached.

## Our Team of Electricians



Dwight Keegel



Kevin Johnson



Rodney Weber



David Henkel

Residential Wiring • Agricultural Buildings • Generators  
Grain Handling Systems • Lighting • Solar Well Pumps  
Trenching Equipment • Electric Heating Systems

**605-996-7516 • 800-477-2892**  
**[www.centralec.coop](http://www.centralec.coop)**

## October 19

4th Annual Fall Festival, East Pierre Landscape and Garden Center, 11 a.m. to 5 p.m., Pierre, SD, 605-224-8832

## October 19

Spooky Science, Sioux Falls, SD, 605-367-6000

## October 19-January 5

Pheasant Hunting Season, Statewide, Pierre, SD, 605-223-7660

## October 25-27

Autumn Festival, An Arts and Crafts Affair, Sioux Falls, SD, 605-331-2889

## October 25-27

ZooBoo, Great Plains Zoo, Sioux Falls, SD, 605-367-7003

## October 26

ZOO BOO, Bramble Park Zoo, Watertown, 605-882-6269

## October 26

Scare in the Square, Rapid City, SD, 605-716-7979

## October 31-November 2

Ringneck Festival and Bird Dog Challenge, Huron, SD, 605-352-0000

## November 1-2

First Chance Bonanza, PRCA Rodeo, Brookings, SD, [www.suttonrodeo.com](http://www.suttonrodeo.com)

## November 2

Fall Fling Craft/Vendor Fair, Dakota Christian School, Corsica, SD, 605-243-2211

## November 9

14th Annual Shopping Extravaganza, 10 a.m. to 4 p.m., Davison County Fairgrounds, Mitchell, SD, Contact Cindy Foster at 605-996-8563



Photo courtesy: Harvest Halloween

## November 9

Holiday Vendor and Craft Show, 9 a.m. to 3 p.m., James Valley Community Center, 300 W 1st Ave., Mitchell, SD, Call 605-995-8441

## November 9

Hairball, Mitchell, SD, 605-995-8430

## November 10

Trinity Lutheran Church 25th Annual Lutefisk, Lefse and Meatball Supper, 4 to 7 p.m., Chamberlain, SD, 605-730-0553

## November 30

Christmas at the Palace, Open House featuring decorated Farmhouse and Barn, door prizes, hot chocolate, cider, mini photo sessions, classes and vendors, 10 a.m. to 4 p.m., The Green Palace Wedding and Event Barn, 24655 354th Avenue, Pukwana, SD, Contact 605-730-6923

## November 15-December 18

Black Hills Christmas Tree Permit Season, Custer, SD, 605-673-9200

## November 16

Christmas Craft Fair, Legion Hall on Main Street, 10 a.m. to 3 p.m., Free admission, Tripp, SD, Contact Becki Hauser at 605-480-3009

## November 22-23

Holiday Arts Christmas Craft Show, Masonic Hall, Mitchell, SD, 605-359-2049

## November 22-January 5

Winter Wonderland, Sioux Falls, SD, 605-275-6060

## November 23-24

Winterfest: A Winter Arts Festival, Aberdeen, SD, 605-226-1557

## November 26-December 26

Christmas at the Capitol, Pierre, SD, 605-773-3178

## November 29-30

1880 Train Holiday Express, Hill City, SD, 605-574-2222

## November 30

Holiday Celebration and Winter Market, Rapid City, SD, 605-716-7979

## December 6-7

Strawbale Winery Twilight Flights, Renner, SD, 605-543-5071

## December 7

Frontier Christmas, Lake City, SD, 605-448-5474

## December 7

Holidazzle Light Parade, Spearfish, SD, 605-717-9294

To have your event listed on this page, send complete information, including date, event, place and contact to your local electric cooperative. Include your name, address and daytime telephone number. Information must be submitted at least eight weeks prior to your event. Please call ahead to confirm date, time and location of event.