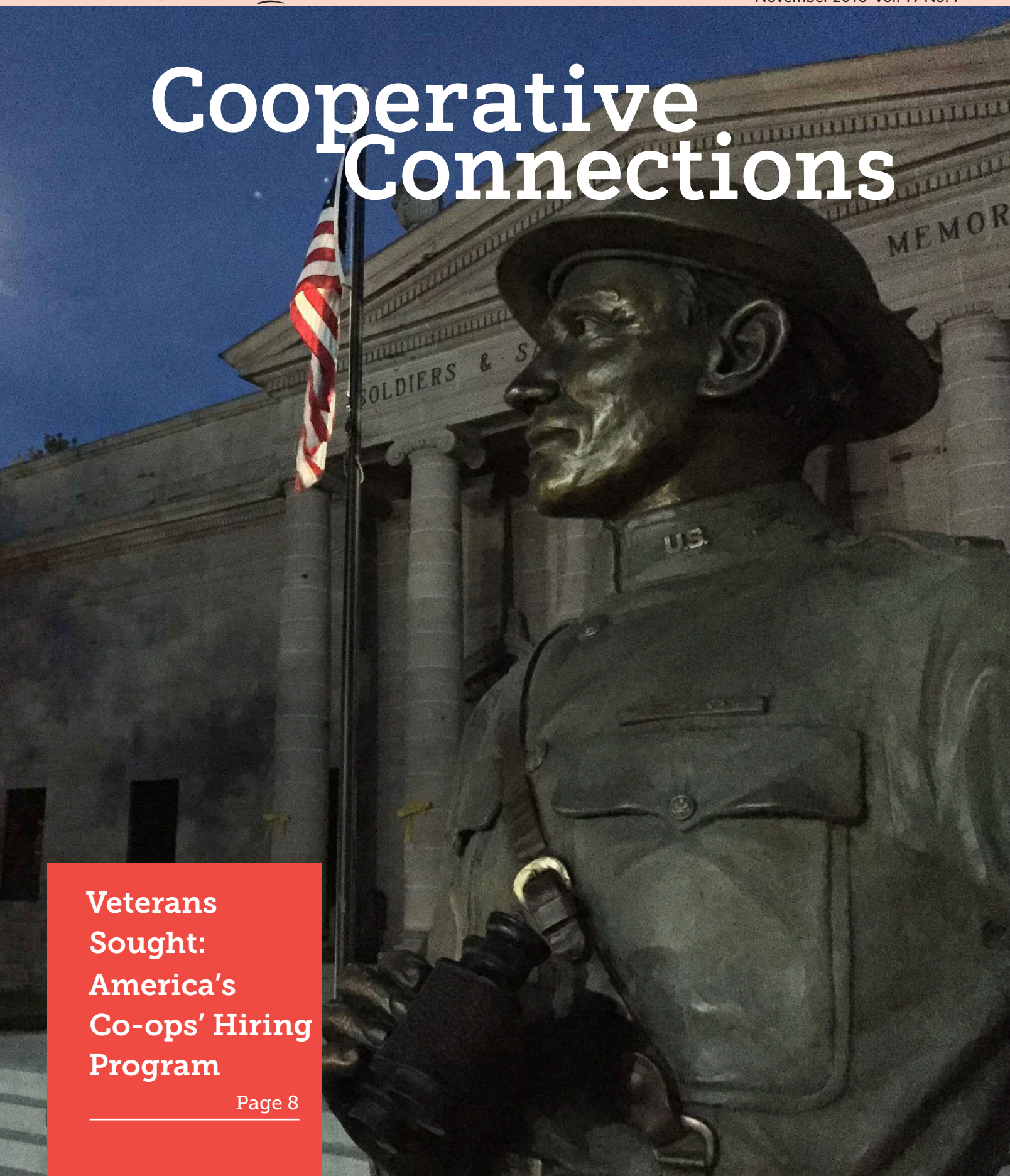


Cooperative Connections

**Veterans
Sought:
America's
Co-ops' Hiring
Program**

Page 8



November offers a time for thanks, reflection and change: **Recognizing Our Role**



Ken Schlimgen

General Manager

**Democracy and
serving our
communities are not
spectator sports.**

November is a time when our nation gives thanks. We recognize Veterans on November 11th and celebrate Thanksgiving on November 22nd. A quote I once read went something like this, "Feeling gratitude and not expressing it is like wrapping a present and not giving it."

I would like to say thank you to those that protected our freedom by serving our country and now continue to serve in our communities. At Central Electric, we are proud to thank employees Mick Poncelet, Lincoln Feistner, Patrick Soukup, and Gene Gaikowski and Board Member Butch Morrison for their service to our country then and our cooperative now.

These individuals and many others fought to protect our freedoms. One of those freedoms we have is the right to vote. On November 6, South Dakotans will be asked to exercise that right. The ballot will be filled with many choices included selecting a United States Representative, Governor and Lieutenant Governor, several amendments, along with several state office positions and local legislative races.

Democracy and serving our communities are not spectator sports. It takes engagement from each of us in order to make our nation a great place to live. Not only do we need to be engaged, but we also must be willing to collaborate with our neighbors, local officials and leaders.

I think back to the 1940s and 1950s when rural electric cooperatives were building power lines across South Dakota. I am sure that not everyone liked the change in the landscape—after all electric cooperatives installed thousands of miles of poles and overhead wires across both public and private property.

Today, I see other industries wanting to be a part of our communities. They include wind turbines and large-scale ag operations, but who knows what the future holds. New industry promises jobs, and opportunities for our children to stay or

come back home. They have the potential to generate revenue for our counties, schools, and yes even your electric cooperative. However, these operations also bring change which affects everyone differently.

I was raised on a small family farm at a time when a scoop shovel was the primary tool for cleaning a hog barn. I admit that I have a lot to learn about today's livestock operations. I also admit that I don't know all the facts about how they impact neighbors, roads, and local schools. In an effort to learn more, I am attending a Livestock Summit to be held on the SDSU campus in Brookings on November 15th.

I would encourage anyone who is interested to register and attend this event. It seems to me that if we are better educated on this issue, and if we take a proactive approach, we might be able to identify sites for these technologies to co-exist and insure they are good neighbors.

I encourage you to work with local planning and zoning boards and county commissioners to discuss and plan the future for your community. Through good planning and open discussion, local citizens should decide if that will include new industry. If we work and plan together, I believe we can minimize potential negatives and gain from opportunities that come knocking on our door.


On a personal note, my coworkers and I want to say thanks to each of our members for the countless acts of kindness we receive throughout the year. We are thankful for your patience on the rare occasion when we are restoring your electric service and for your support all year long.

Your cooperative was established about 70 years ago to bring electricity to this area when no one else would. Together, let's continue making our corner of the world a better place for ourselves and our children.

Until Next Month – Be Safe

CENTRAL

ELECTRIC COOPERATIVE

A Touchstone Energy® Cooperative 

(USPS 018-963)

Board of Directors

Duane Wolbrink - President
 Todd VanWalleghen - Vice President
 Bernetta Burghardt - Secretary
 Jim Headley - Treasurer
 Mark Hofer - SDREA, NRECA
 Roger Campbell
 Donita Loudner
 Darwin "Butch" Morrison
 Mark Reindl

General Manager: Ken Schlimgen

Editor: Courtney J. Deinert -
 courtneyd@centralec.coop

Assistant Editor: Patrick Soukup

CENTRAL ELECTRIC COOPERATIVE CONNECTIONS is the monthly publication for the members of Central Electric Cooperative, PO Box 850, Mitchell, SD 57301. Families subscribe to Cooperative Connections as part of their electric cooperative membership. Central Electric Cooperative Connections' purpose is to provide reliable, helpful information to electric cooperative members on matters pertaining to their cooperative and living better with electricity. Also available at www.centralec.coop.

This cooperative is an equal opportunity provider, employer and lender. If you wish to file a Civil Rights program complaint of discrimination, complete the USDA Program Discrimination Complaint Form, found on-line at http://www.ascr.usda.gov/complaint_filing_cust.html, or at any USDA office, or call (866) 632-9992 to request the form. You may also write a letter containing all of the information requested in the form. Send your completed complaint form or letter by mail to U.S. Department of Agriculture, Director, Office of Adjudication, 1400 Independence Ave, S.W., Washington, D.C. 20250-9410, by fax (202 690-7442) or e-mail at program_intake@usda.gov.

Subscription information: Central Electric Cooperative members devote 50 cents from their monthly electric payments for a subscription. Non-member subscriptions are available for \$12 annually. Periodicals Postage Paid at Central Electric Cooperative, PO Box 850, Mitchell, SD 57301, and at additional mailing offices.

Postmaster: Please send address changes to Central Electric Cooperative, PO Box 850, Mitchell, SD 57301. Address all other correspondence to: Cooperative Connections, PO Box 850, Mitchell, SD 57301 Telephone: (605)996-7516; Fax: (605) 996-0869; e-mail: cec@centralec.coop; website: www.centralec.coop.

Office Information

M-F 8:00 a.m. - 4:30 p.m.
 800-477-2892 or
 605-996-7516
www.centralec.coop



Mission Statement

Provide Reliable Energy & Services
 with a Commitment to Safety and
 Member Satisfaction

Your local Touchstone Energy®
 Cooperative presents the first

LIVESTOCK DEVELOPMENT SUMMIT

NOVEMBER 15, 2018
 SDSU CAMPUS, BROOKINGS, S.D.
yourcooppower.com/LivestockSummit



Featured Speaker

Barry H. Dunn, PhD
 President, South Dakota State University



Featured Speaker

Governor Dennis Daugaard

Panel Discussions

Economic Impact
 Young Farmers & Agribusiness Financing
 Siting, Zoning and Permitting



Networking

Talk with industry experts and other livestock developers

TO REGISTER: visit www.yourcooppower.com/LivestockSummit
COST: FREE! Please RSVP before November 1

Our office will be closed on
Monday, November 12
 in observance of Veterans Day.



Employee Years of Service

Tim Neises

November 19 -39 years

Thank you for your service to the cooperative!

Halloween Safety Tips

Are your Halloween traditions a trick or a treat? The following helpful tips will let you know if real danger is lurking in your Halloween décor.

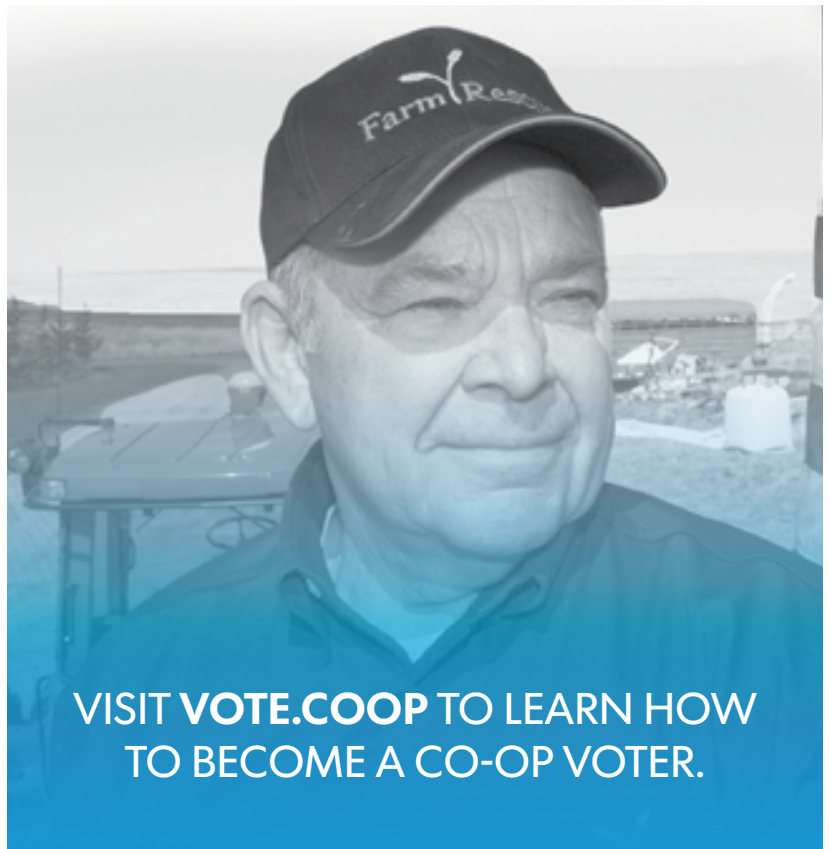
Trick:

- Costumes can catch fire! Avoid costumes with billowing or long trailing fabric. If you are making your own costumes, choose fire-resistant materials.
- Never use electrical products outdoors that are marked "for indoor use." You could get shocked – or worse!
- Avoid using dried flowers, corn stalks, hay or crepe paper in your festive decorations. These items are highly flammable and could even be ignited by heat from a nearby light bulb or heater.
- Never block exits or escape routes.

Treat:

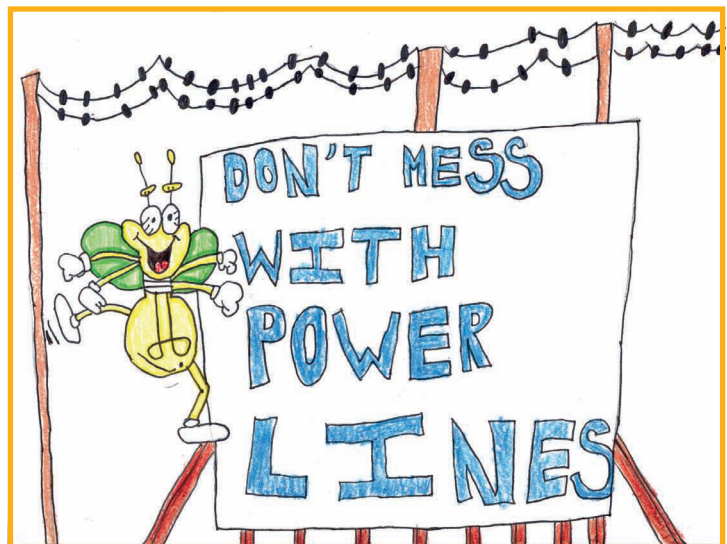
- Inspect all electrical decorations and extension cords before use. Discard any that have cracked, frayed or exposed wiring.
- Outdoor electrical decorations are increasingly popular. To reduce your risk of shocks, ground fault circuit interrupters (GFCIs) should be used wherever water may come into contact with electrical products. Replace traditional receptacles with GFCIs or use a portable one.
- Use only electrical lights and decorations that are approved for safe use by a nationally tested laboratory such as UL, Intertek (ETL) or CSA.
- Always turn off electrical decorations and extinguish any open flames before leaving home or going to bed.
- Use a flashlight or battery-operated candles in a jack-o-lantern. If you must use a real candle, use extreme caution as it can start a fire or burn someone.
- Curiosity leads to many things, not all of them safe. Protect children by installing tamper resistant receptacles in your home. This permanent, cost-effective solution prevents injuries and deaths caused by the insertion of foreign objects into outlets.

Source: esfi.org



VISIT **VOTE.COOP** TO LEARN HOW TO BECOME A CO-OP VOTER.

KIDS CORNER SAFETY POSTER



"Don't mess with power lines."

Jackson Baumgarn, 8 years old

Jackson is the son of Casey and Anne Baumgarn, Webster, S.D.

They are members of Lake Region Electric Association, Webster.

Kids, send your drawing with an electrical safety tip to your local electric cooperative (address found on Page 3). If your poster is published, you'll receive a prize. All entries must include your name, age, mailing address and the names of your parents. Colored drawings are encouraged.



Crock Pot Creations

3-Bean Crockpot Casserole

1/2 lb. bacon	1/2 cup brown sugar
1/2 lb. hamburger	1/2 cup ketchup
1 cup chopped onions	1 can pork and beans
1/2 tsp. salt	1 can lima beans
2 T. vinegar	1 can kidney beans
1 T. prepared mustard	

Brown bacon until crispy. Brown hamburger with the onions. Combine all ingredients in a crock pot. Cook on LOW for 3 to 4 hours.

Mary Ellen Luikens, Tea, SD

Triple Chocolate Surprise

1 (18 oz.) chocolate cake mix	3/4 cup oil
8 oz. sour cream	4 eggs
1 pkg. instant chocolate pudding	1 cup water
	1 cup chocolate chips

Combine all ingredients. Spray crock pot with no stick cooking spray. Pour mixture into pot. Cook on LOW 6 to 8 hours.

Betty Klingbile, Wall, SD

Juanita's Crockpot Peanut Clusters

1 (16 oz.) jar salted peanuts	4 oz. German chocolate bar, broken into pieces
1 (16 oz.) jar unsalted peanuts	3 lbs. almond bark, broken into pieces
1 (12 oz.) bag semi-sweet chocolate chips	

Layer ingredients in crock pot in order given. Cook on LOW for 3 hours. DO NOT OPEN. After 3 hours, stir and cook an additional 5 minutes. Turn off crock pot and let cool at least 15 minutes. Stir and spoon heaping spoonfuls onto waxed or parchment paper. Let sit until set.

Marcia Broone, Rapid City, SD

Slow Cooker Chicken Rice Curry

4 bone-in chicken breasts, halves (about 2 lbs.), skin removed	1 medium Golden Delicious apple, unpeeled, cored and coarsely chopped
1 T. McCormick® Curry Powder	1/4 cup raisins
1 pkg. McCormick® Chicken Gravy Mix	1/4 cup McCormick® Onions, Chopped
1 (14.5 oz.) can chicken broth	2 McCormick® Bay Leaves, broken in half
1 medium red bell pepper, cut into 1/2-inch pieces	1/2 tsp. McCormick® Garlic Powder
	1 cup instant rice

Rinse chicken and pat dry. Cut each breast half into 2 pieces. Sprinkle chicken with curry powder. Gradually stir gravy mix into broth in slow cooker until well blended. Add seasoned chicken and remaining ingredients except rice; stir well. Cover. Cook 8 hours on LOW or 4 hours on HIGH. Gently stir in rice. Cover. Cook 15 to 20 minutes longer on HIGH or until rice is tender. Remove bay leaves before serving. Makes 6 servings

Nutritional Information Per Serving: Calories 296, Total Fat 4g, Cholesterol 78mg, Sodium 600mg, Protein 35g, Carbohydrates 30g, Dietary Fiber 2g

Pictured, Cooperative Connections

Crockpot French Dip Sandwiches

3 lb. roast, beef or pork	1 (10 oz.) can beef broth
1 (10 oz.) can French onion soup	1 (12 oz.) can beer
	Swiss cheese

Cook above ingredients in crock pot on LOW for 7 hours. Shred meat with fork. Let set 30 minutes. Fill buns (I use steak buns). Top with Swiss cheese. Use the juice in crock pot for dipping, if desired.

Jane Ham, Rapid City, SD

Please send your favorite holiday, soup or brunch recipes to your local electric cooperative (address found on Page 3). Each recipe printed will be entered into a drawing for a prize in December 2018. All entries must include your name, mailing address, telephone number and cooperative name.

Corsica-Stickney Senior Earns Regional Scholarship

Scholar of the Week

Abby Dethlefsen has been named the Touchstone Energy Scholar of the Week for the week of September 16-22, 2018.

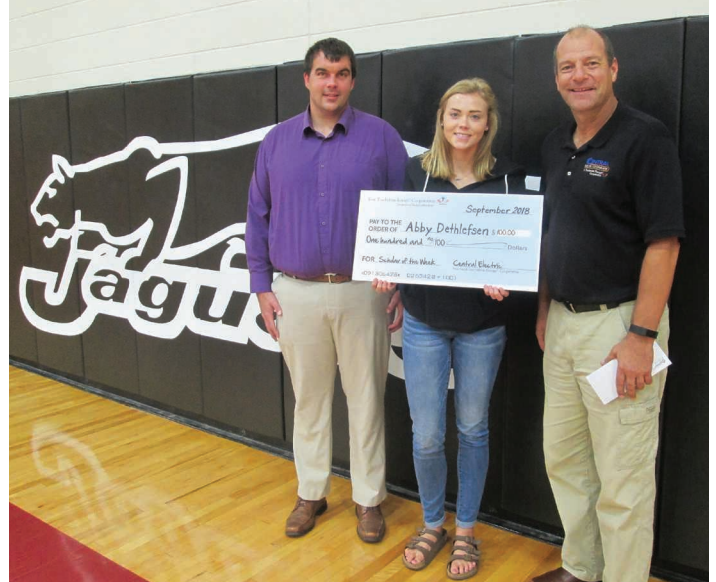
Dethlefsen is the daughter of Clyde and Cheryl Dethlefsen and is currently a senior at Corsica-Stickney High School.

In addition to her 4.0 GPA, Dethlefsen is an athlete and active member of her school, church and community. Dethlefsen is in volleyball, track and field, has played basketball, holds an office in student council, is in FCCLA, National Honor Society, 4-H President, and serves on the Farmer's Union junior advisor council.

"Abby not only does great at school, but she does a lot for the community," says Principal Andrew Fergen, who nominated Dethlefsen for the award. "She's from the Stickney area, but as a student of a consolidated school, she's involved in both communities."

Central Electric, a Touchstone Energy Cooperative, awarded a \$100 scholarship to Dethlefsen. Central Electric Manager Ken Schlimgen visited Corsica-Stickney High School to recognize her and present the award. Dethlefsen was also featured on KSFY TV news, which can also be found on KSFY.com.

The Scholar of the Week scholarship was created by KSFY and Touchstone Energy Cooperatives to recognize outstanding students across the state who set an example of hard work and high academic standards. Area school principals and faculty



General Manager Schlimgen visited the Corsica-Stickney School to present Dethlefsen with a scholarship. Pictured left-right: Principal Andrew Fergen, Dethlefsen, Schlimgen

nominate students for this award, based on excellence in the classroom, service in the community and extracurricular participation. The KSFY staff makes weekly selections throughout the school year.

HAPPY THANKSGIVING



Our office will be closed on November 22.

Henkel Joins Wiring Team



David Henkel has joined Central Electric as a journeyman electrician. He previously attended Mitchell Technical Institute and worked at Muth Electric for 19 years.

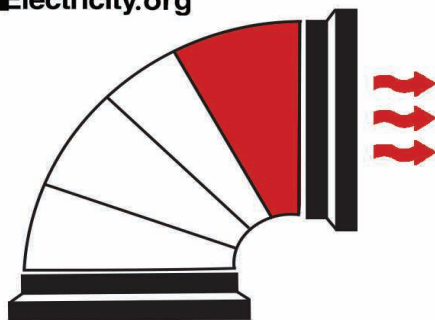
He and his wife, Jamie, live outside of Mitchell and have three children, Delana (13), Bailey (12), and Devin (8). Jamie works as the Aquatics/Recreation Coordinator for the City of Mitchell.

In his spare time, he's an active member of Trinity Lutheran church, youth trap shooting coach, township board member and enjoys hunting and fishing.

"I've known quite a few people who work here, and it's always seemed like a great place to work," says Henkel.

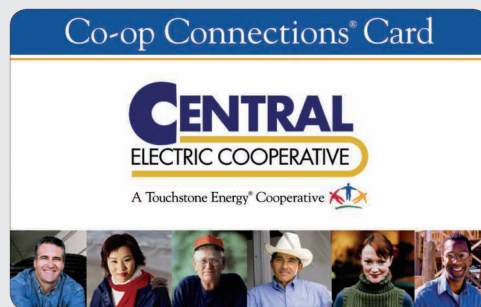
We are happy to welcome Dave and his family to the cooperative!

Safe Electricity.org



Air leaks in ducts can account for about 20-30% of wasted heat.

Local Discounts with your Co-op Connections® Card



Your cooperative membership earns you discounts at local participating businesses.

Simply show your Co-op Connections Discount Card and save!

- 1) **Northside & Westside Sinclair, Mitchell, SD;**
5 cents off a gallon of fuel.
- 2) **OnSight 24/7, Mitchell, SD;**
10% off products and services.
- 3) **Photography Unlimited, Mitchell, SD;**
Free session & 10% off your order.
- 4) **The Pin Cushion, Mitchell, SD;**
Buy 1 Aurifil thread at regular price and get 2nd one at 50% off.
- 5) **R M Associates, Mitchell, SD;**
Farm or personal income tax \$125 for appointments made by December 1. All short form Income Tax Returns 1040A & 1040 EZ \$15.
- 6) **Rob's Short Stop, Mitchell, SD;**
Large nachos with chili and 16 oz fountain pop for \$2.75.
- 7) **Sun Gold Trophies, Inc., Mitchell, SD;**
15% off storewide, some exclusions apply.
- 8) **Tessiers, Inc., Mitchell, SD;**
10% discount on residential service or maintenance work only. Discount cannot be used in conjunction with any other discount or for commercial work or installations.

For a full list of ways to save, visit www.connections.coop.

To request a card or become a participating business, visit www.centralec.coop or call 800-477-2892 or 605-996-7516.





Military veterans meet with electric co-op leaders at a Veterans in Energy event. Veterans in Energy is a professional development group that was formed through NRECA's Serve Our Co-ops; Serve Our Country initiative to help veterans transition into the energy workforce after they've been hired at electric cooperatives.

An Electric Co-op Mission to **HIRE VETERANS**

Paul Wesslund

NRECA

Electric cooperatives are working to make even better use of a powerful source of energy – military veterans.

“Veterans, active military and their spouses are some of our greatest assets as employees,” says Michelle Rostom, director of workforce development for the National Rural Electric Cooperative Association (NRECA). “They are mission-driven. When we think about providing safe, reliable and affordable power, we know our veterans – whatever their job – are focused on making sure we are operating safely and that we are creating a reliable electric network for co-op members.”

Rostom spends a lot of her time getting more veterans hired by electric co-ops in her role as program manager for NRECA's initiative called “Serve Our Co-ops; Serve Our Country.”

The program launched in January 2016 “to honor and employ veterans,” said Rostom.

Since then, the program has been forming a coalition of co-ops and other groups to focus attention on the benefits of hiring veterans and to actually hire more veterans.

In announcing the program, Jim Matheson, CEO of NRECA,



An NRECA Commemorative Coin Recognizes veterans hired through the Serve Our Co-ops; Serve Our Country program. On the Cover: A statue of South Dakota Gov. Leslie Jensen, who was governor in 1937-1939, stands in front of the Soldiers and Sailors Memorial Building in Pierre. Jensen served in both WWI and WWII.

said, “Our military veterans deserve our unending gratitude for their service to our country, on Veterans Day and every day. Veterans possess many of the qualities sought by electric co-ops, including a deep commitment to service and an uncompromising work ethic. More than 200,000 service members transition out of the military to civilian life each year and we’d like to tap into that talent to help fill the thousands of co-op jobs opening up.”

Hiring veterans is certainly a decent thing to do, but Rostom lists why it makes business sense as well.

“They understand their role and they go out and execute it,” she says. “They bring leadership skills, they work in teams and look out for each other in that kind of ‘brotherhood.’ They work in all types of weather. They are disciplined. They show up on time. Those are professional competencies that not every job applicant brings with them, but you find them in the military.”

The initiative grew out of broader strategic planning by NRECA. That plan envisioned that 25,000 jobs at electric co-ops would need to be filled in the next few years.

“We are racing to make sure we have the right talent applying for our jobs,” says Rostom.

Part of that work has been developing and distributing information to bring attention and advice aimed at connecting veterans with co-op jobs. A series of three checklists published by the program helps guide electric co-ops in setting up a veteran hiring effort. The checklists show co-ops how to recognize veterans, contact groups in their communities for broad-based effectiveness and bring attention to the skills and abilities veterans offer.

Some of those skills and abilities might not be immediately obvious, says Rostom, like what they learn by having to change their job and their residence every few years.

“They are trained to learn,” she says. “They change jobs every couple of years, so they learn to adapt.”

Serve Our Co-ops; Serve Our Country also started a group called “Veterans in Energy,” a professional organization to go

beyond hiring, by helping veterans transition into the energy workforce.

Military spouses make up another often-overlooked resource, says Rostom.

“You’ll get resumés for a spouse and they will have big gaps in their experience,” she says. “They’ve put their career path

Our military veterans deserve our unending gratitude for their service to our country, on Veterans Day and every day.

on hold to follow their spouse around the world with the military, so don’t just discount that resumé.”

Rostom says, “They’ve had to move their family probably 10 times over the past 15 years, so they have to plan, they have to find housing, find schools, medical care – and they’re doing that without their spouse there, who is deployed somewhere. Often, they are volunteering, so they are community-focused, which is what we look for in the co-ops. In working with

groups of volunteers, they are managing people, they are probably managing a budget, they are securing vendors for events. There are a lot of skill sets that they bring.”

Rostom continues, “Many are working on a degree while they are moving around the world. They are a phenomenal group of untapped talent we should consider. When you see that resumé, it doesn’t say military spouse, but I think it should. It totally changes the game – it shows the potential employer why their career has been put on hold. They are smart, educated, they are project managers, they work with diverse groups of people. They’re an untapped group of talent that we don’t always think about.”

Through Serve Our Co-ops; Serve Our Country, electric co-ops are better positioned to increase their veteran workforce and support local veteran communities. To learn more about the program, visit www.servevets.coop.

Paul Wesslund writes on consumer and cooperative affairs for the National Rural Electric Cooperative Association, the national trade association representing more than 900 local electric cooperatives. From growing suburbs to remote farming communities, electric co-ops serve as engines of economic development for 42 million Americans across 56 percent of the nation’s landscape.



Photo by NRECA

Operation Round-Up Deadline Approaching

The next application deadline for Operation Round-Up funds is November 1, 2018.

Funds will be awarded shortly after the deadline to worthy organizations or individuals in our local communities.

Operation Round-Up is intended to benefit people and organizations within the Central Electric service area. The funding is focused on impacting the following categories:

- Community Service
- Environment
- Economic Development
- Disaster Relief
- Emergency Energy Assistance
- Education and Youth

Applications can be found at www.centralec.coop or by contacting our office.

Thank you to our members who participate in Operation Round-Up and make this possible. **Since the program's initiation in 2015, our members have invested over \$60,000 back into our local communities!** Your donation makes a direct impact in keeping money local and growing our communities.

The average donation per member is \$6.00 per year. To sign up for Operation Round-Up, visit www.centralec.coop or contact our office.



Line Construction to begin south of Mitchell

Central Electric has contracted with Boldt Power, Inc. out of Dupree, SD to begin line construction on October 15th south of Mitchell. Construction is scheduled to last approximately four weeks. Boldt Power has worked with Central Electric previously. After the 2005 storm, Boldt built approximately 30 new miles of line for us and is familiar with the area.

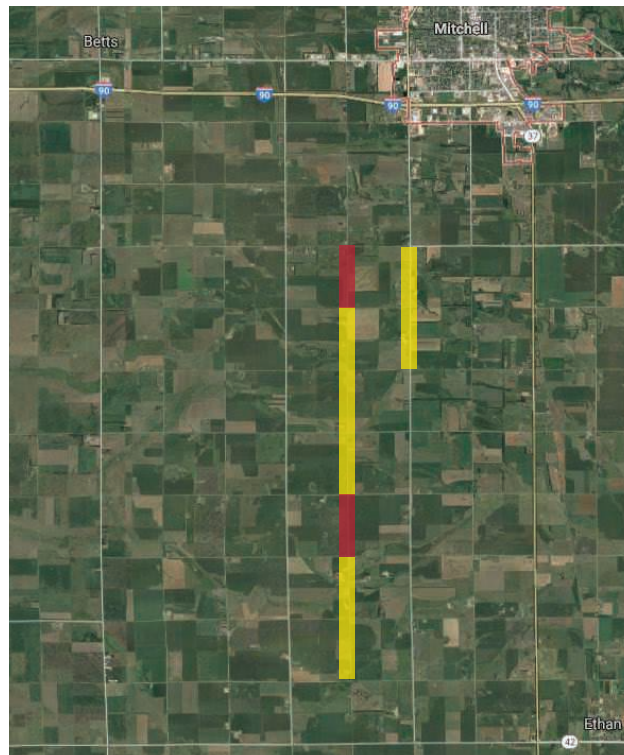
The construction areas will be located along the following: 1) 408th Avenue between 257 and 259th Street; 2) 407th Avenue between 258 and 261st Street; and 3) 407th Avenue between 262 and 264th Street. Crews will be replacing older line, due to its age and condition, and installing heavier poles and wire. The line between 262 and 264th will be converted from three-phase to single-phase.

Two miles of line along 407th Avenue will also be retired, and members will be fed power from a different direction for stronger reliability.

Crews have already cleared trees from the construction areas. They have also installed some lines to allow us to back feed, or reroute, power to our members during construction and limit outages. In the case where an outage is required, we will attempt to contact members ahead of time.

Boldt Power will distribute the retired poles to landowners. If we happen to miss a landowner, please contact us.

Please also respect work zones, and remember to get over and drive slowly. We appreciate your cooperation in keeping the crews safe.



Yellow = Update to new line.

Existing older overhead line will be replaced with heavier poles and conductor wire.

One section of three phase will be converted to single phase.

Red = Line to be abandoned.

Two miles of line will be retired, and members will be fed power from a different direction. This will allow for stronger reliability.

Tips for honing in on safety while hunting

Sights on Safety



Hunters know that safety plays an important role in the sport. However, it's not uncommon for utility equipment or potential electrical hazards to go unnoticed. Central Electric urges hunters to take precautions and be aware of potential electrical hazards while hunting.

1) Before leaving for a hunting trip, make sure that you have safety items to signal for help in case of an emergency. Always carry emergency supplies in the event of an accident. A cell phone, whistle, and flashlight are necessary items to carry with you throughout a hunting trip.

2) Note the location of power lines and other electrical equipment before you begin a hunt. Be especially careful and observant in wooded areas where power lines are easy to overlook.

3) Obey all signs or postings that advise electrical safety, especially when selecting the location for a tree stand. Tree stands are the leading cause for hunting injuries. If you are using a tree stand, make sure you read the manufacturer's instructions and inspect the stand for wear before use.

4) Never use power poles to support a tree stand. Look for an ideal tree for your stand, one that is sturdy and alive. While

going up to the stand, keep at least three points of contact while you climb.

5) Never shoot nearby power lines or other electrical equipment. A single shot can cause vast damage to the electrical system. Damage to electrical equipment can result in power interruptions and physical risks to those nearby.

6) When setting up and taking down the stand, make sure you do not make contact with any overhead electrical equipment.

7) If you are using a portable electrical generator on your hunting trip, make sure that you do not run it in a confined area. Do not use it inside a cabin or RV. Make sure that it is used outside where there is plenty of ventilation.

The majority of hunters practice safe hunting and understand the risks when discharging a firearm. We encourage all experienced hunters who are familiar with the area to identify the locations of utility equipment to young or new hunters. Remember to always check what is in front of or beyond your target and not to get caught up in the excitement of the hunt. Enjoy the great outdoors – just be sure to hunt only what's in season.

OFFICIAL NOTICE OF PUBLICATION STATEMENT OF OWNERSHIP, MANAGEMENT AND CIRCULATION (REQUIRED BY 39 U.S.C. 3685)

1. Publication Title: Central Electric Cooperative Connections
2. Publication No.: 018-963
3. Filing Date: September 27, 2017
4. Issue Frequency: Monthly
5. No. of Issues Published Annually: 12
6. Annual Subscription Price: \$6 for members; \$12 Non members
7. Complete Mailing Address of Known Office of Publication: 25487 403rd Ave, Mitchell, SD 57301
8. Complete Mailing Address of Headquarters or General Business Office of Publisher: 25487 403rd Ave, Mitchell, SD 57301
9. Full Names and Complete Mailing Address of Publisher, Editor & Managing Editor:
Publisher: Central Electric Cooperative, 25487 403rd Ave, Mitchell, SD 57301
Editor: Courtney J. Deinert, Central Electric Cooperative, 25487 403rd Ave, Mitchell, SD 57301
Managing Editor: Courtney J. Deinert, Central Electric Cooperative, 25487 403rd Ave, Mitchell, SD 57301
10. Owner: Central Electric Cooperative, 25487 403rd Ave, Mitchell, SD 57301
11. Known bondholders/mortgagees, and Other Security Holders Owning or Holding 1 Percent or More of Total Amount of Bonds, Mortgages, or Other Securities: US Dept of Ag, RUS, 1400 Independence Ave SW, Washington, D.C. 20250-1566; CFC, Woodland Park, 2201 Cooperative Way, Herndon, VI, 22071.
12. Tax Status: Purpose, function and nonprofit status of this organization and the exempt status for federal income tax purposes: Has Not Changed During Preceding 12 Months
13. Publication Title: Central Electric Cooperative Connections
14. Issue Date of Circulation Below: Oct. 2018

15. Extent and Nature of Circulation	Avg. No. of Copies Each Issue Previous 12 months	Single Issue Nearest to Filing Date
A. Total number of copies (net press run)	4861	4850
B. Paid and/or Requested Circulation		
1. Paid/Requested Outside County Mail	0	0
2. Paid In-County	0	0
3. Sales through Dealers, Carriers, Street Vendors & Counter Sales	0	0
4. Other Classes mailed through USPS	0	0
C. Total Paid and/or Requested	4625	4614
D. Free Distribution by Mail/Outside Mail	215	216
E. Total Free or Nominal	215	216
F. Total Distribution	4841	4830
G. Copies Not Distributed	20	20
H. Total	4861	4850
I. Percent Paid/Requested	95%	95%

Statement of Ownership, Management and Circulation as of October 1, 2018



Campaign buttons advocating a no vote on Amendment W are pictured.

ELECTRIC CO-OPS JOIN FIGHT AGAINST W

Brenda Kleinjan

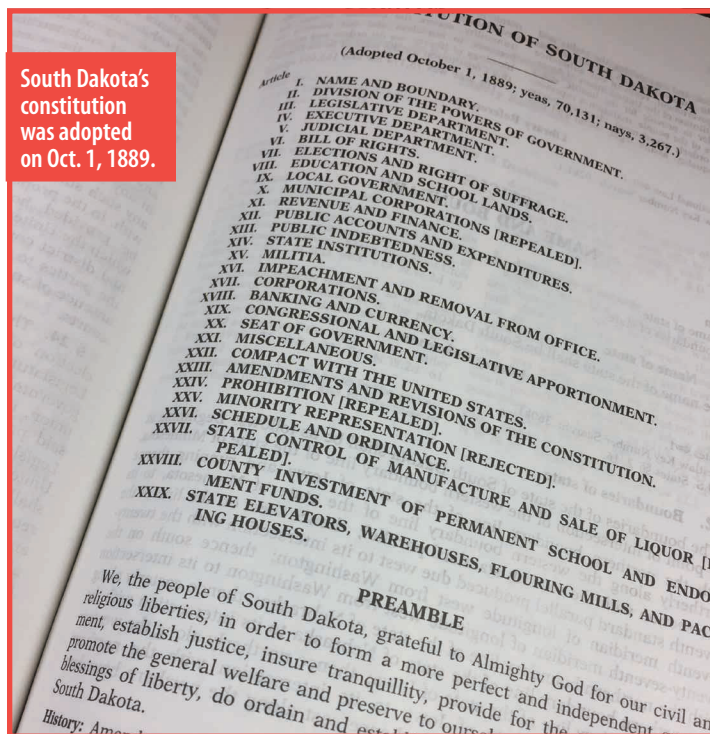
brenda.kleinjan@sdrea.coop

South Dakota's electric cooperatives, through their statewide association, the South Dakota Rural Electric Association in Pierre, have joined with more than 30 other South Dakota-based groups and individuals opposing an amendment to the South Dakota constitution.

Voters in November will decide the fate of Amendment W, which is titled "An initiated amendment to the South Dakota Constitution changing campaign finance and lobbying laws, creating a government accountability board, and changing certain initiative and referendum provisions." A "yes" vote would change South Dakota's constitution. A "no" vote leaves the constitution as is.

"Amendment W creates an entirely new article of the South Dakota Constitution and declares that the new article is superior to all other sections of the constitution. It creates a non-elected tribunal called "The State Government Accountability Board," forces the

South Dakota's constitution was adopted on Oct. 1, 1889.



legislature and Governor to fund it and allows that board to go to court for more money,” said David Owen, president of the South Dakota Chamber of Commerce and Industry.

Owen is the head of a coalition of South Dakota groups that have formed the “W is Wrong” statewide Ballot Question Committee opposing the amendment.

“No other state has anything like Amendment W,” Owen said. “Only two other states even mention an ethics board in their constitution and neither of them overrides the legislative process for funding and oversight.”

The SDREA board – comprised of local South Dakotans elected by their neighbors to serve on their local electric cooperative board and then elected to serve on the statewide board – has historically been engaged on advocating on behalf of their member-owners. SDREA was formed in 1942 to help cooperatives bring electricity to the state and continues to work to give voice to the 120,000 co-op members in the state. In Minnesota, the Minnesota Rural Electric Association does similar work on behalf of Minnesota electric cooperatives. The SDREA board consists of members of multiple political ideologies and parties.

“In reaching their conclusion to oppose Amendment W, the SDREA board walked through the proposed language thoughtfully and considered its potential ramifications carefully,” said Ed Anderson, general manager of the South Dakota Rural Electric Association. “With any proposed initiated measure or constitutional amendment this complex, a thoughtful, reasoned consideration of all possible effects is the only responsible approach to take and I applaud them for their effort.”

To see the amendment in its entirety, along with other measures voters will be deciding on in November, go to <https://sdsos.gov/elections-voting/upcoming-elections/general-information/2018-ballot-questions.aspx>

Who Backs W?

Promoters of Amendment W claim to be a South Dakota group calling themselves “Represent South Dakota.” Financial reports from 2017 and from this year’s pre-primary report show that the effort has been funded from a Massachusetts organization known as “Represent US.”

For calendar year 2017, the Amendment W campaign reported to have raised \$369,588; and spent \$362,348 – leaving a balance of \$7,240

2017 notable contributions were:

- Represent US – Florence, MA – \$121,000
- End Citizens United Non-Federal – \$15,000 (in-kind)
- Donated by Represent US – \$47,238

Plus a supplemental report that is 191 pages of individual contributions – many multiple \$1, \$3, \$5 listings – totaling \$233,588 and not one from South Dakota. The last eight donations were responsible for 50 percent of the total. This report sets the stage of a deceptive claim that there are thousands of supporters of Amendment W who gave small contributions.

Right before the primary election the Amendment W campaign reported they had raised an additional \$26,681 and spent \$33,084 – with a new balance of \$837.40.

Why is W Wrong?

- Amendment W creates an entirely new Article of the South Dakota Constitution and declares that the new article is superior to all others sections of the constitution and all other provisions of law.
- The Amendment bluntly states that **“if there are any conflicts with any other provisions of the constitution and the new article, this article shall control.”** Amendment W gives the new article control over the executive, legislative, and judicial branches of the constitution. To further secure this power the amendment uses the phrase **“notwithstanding any other provision of the constitution”** four times including a specific reference to Article II – which states **“The powers of the government of the state are divided into three distinct departments, the legislative, executive and judicial; and the powers and duties of each are prescribed by this Constitution.”**
- Amendment W creates an inquisition style board called “The State Government Accountability Board” and gives it unprecedented powers including taking anonymous complaints about campaign violations and a long list of other powers including (but not limited to): **(I) Investigate any allegation of bribery, theft, or embezzlement of public funds, or any violation of this Article, ethics rule, or state law related to government ethics, campaign finance, lobbying, government contracts, or corruption by any elected or appointed official, judge, or employee of any state or local government and to issue subpoenas related to the investigation;**
- This inquisitorial board will have authority over all “non-federal elected officials” starting with the Governor and ending with members of road districts and irrigation districts and political precinct chairmen and chairwomen. The reach of the new board includes every public employee working for state, county and local governments including townships.
- The members of the board are required to disclose the conflicts of interest and are expected to recuse themselves from participating in any investigation that deals with those conflicts unless **“the board member’s vote is necessary to resolve the matter”**...meaning that a member of the board with a conflict of interest will only vote when it matters most.
- The Amendment uses the constitution to appropriate and annual budget for the new board of \$389,000 (increasing with inflation) which is in direct conflict with the other provisions of the Constitution that require that appropriations be in the annual budget or a separate spending bill and passed with a 2/3rds majority of both the Senate and House of Representatives. The new board is also empowered to intervene in any civil lawsuit. **“The board may intervene as a matter of right in any civil action involving any government entity, agency, or instrumentality alleged to be in violation of any mandate or prohibition under this Article and to and in any civil action relating to the board’s powers or the sufficiency of resources provided for the board’s implementation and operation.”**

Source: <http://www.wiswrong.com/amendment-w.html>

Smart Thermostat Installation

Reviewing the impacts on our bill and lifestyle.



Courtney J. Deinert

courtneyd@centralec.coop

How we used the thermostat

The thermostat provides service reminders, allows us control with a tap on our phones, and to set up schedules around our lifestyle, rather than maintain a constant temperature:

	Winter	Summer
Sleeping	65°F	70°F
Home	65-72°F	72-75°F
Away	60°F	78°F
Vacation	-	80°F

Other factors impacting our energy bill

In order to fairly compare energy use before and after the thermostat, I should recognize other factors that impacted our bill:

Family addition: We welcomed our son in July after the install; therefore, I was home with our son during my leave, which increased overall energy use. This also required us to keep our home at a more comfortable temperature.

Space heater: We now ran a space heater at times in our son's room.

New door: We replaced the old, drafty door from our garage to our kitchen with a new, tightly sealed fire-proof door shortly before installing the thermostat.

Let's talk numbers

The following winter, we saw a slight dip in our gas use (see graph below). Our investment didn't immediately pay off but will make a difference over time.

Initial Cost of Smart Thermostat:	\$129-400
Winter Energy Savings for 1 Year:	\$12.25

Note: The winter months in 2017 were also on average 3° warmer

Other than energy cost savings, the thermostat added convenience and comforts to our home, such as increasing the temperature on a chilly morning before our feet hit the floor, or coming home to a cool house after a weekend away.

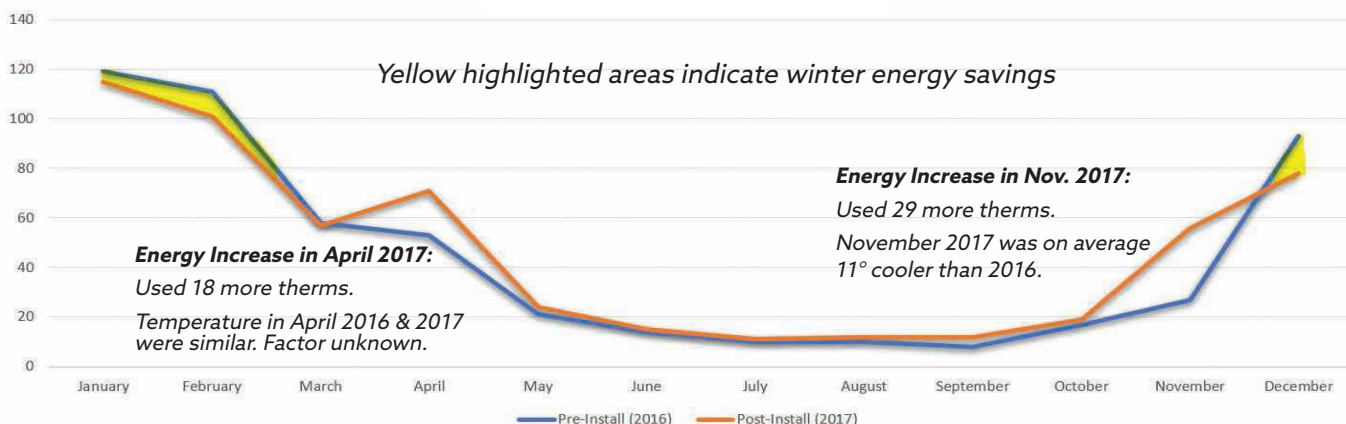
What can I learn from this?

No matter what type of gadgets you install, your home is only as efficient as its shell. If your main concern is saving energy, start by sealing drafts, inspecting insulation, and using curtains or blinds. These small measures will have the quickest return on investment, and in turn, allow any devices to operate more efficiently.

If you have an appetite for smart-home technology, it can be an excellent tool! And don't let the term "smart-home" intimidate you. Most technology is designed to be as user-friendly as possible. If you need help analyzing your bill or are not sure where to start, give our office a call.

Next on my husband's "honey do" list includes installing "smart lights" and other equipment. We'll let you know how it goes.

Therms (Furnace, Water Heater)



ENERGY AUDITS AVAILABLE



Find real cost savings and make your home more energy efficient.

Level I Energy Audit \$175

Consists of Walk Through

Level II Energy Audit \$ 250

Consists of Walk Through & Full Home Pressure Test

Ask about rebates for Central Electric members after completing an energy audit!

FURNACE TUNE-UP SPECIAL



Tune-Up for \$95.00

Regular maintenance helps prevent the inconvenience of a breakdown and costly emergency repair fees.



Lincoln Feistner



Donn Koster



Wade Brozik



Aaron Punt

October 20

SD State High School Boys and Girls Cross Country Meet, Yankton Trail Park, Sioux Falls, SD

October 20-21

South Dakota State and National Corn Husking Contest, State is on the 20th and National on the 21st, 9 a.m., Flandreau, SD

October 26-27

Harvest Halloween, Yankton, SD, info@harvesthalloween.com

October 26-27

Deadweird, Deadwood, SD, 605-578-1876

October 26-27

Phobia Haunted Trail, 7 to 11 p.m., \$5 pre-order, \$7 at gate, \$30 group rate for up to 8, Reclamation Ranch, 40787 259th St., Mitchell, SD

October 26-28

ZooBoo, Sioux Falls, SD, 605-367-7003

October 26-28

Autumn Festival, An Arts and Crafts Affair, Sioux Falls, SD, 402-331-2889

October 27

Scare in the Square, Rapid City, SD, 605-716-7979

October 27

Family and Kid-friendly Walk-through Phobia Haunted Trail, 5 to 7 p.m., No live actors, Free will donation, Reclamation Ranch, 40787 259th St., Mitchell, SD

October 27

ZOO BOO, Watertown, SD, 605-882-6269

October 20-January 6:
Pheasant Hunting Season,
Statewide, Pierre, SD,
605-223-7660

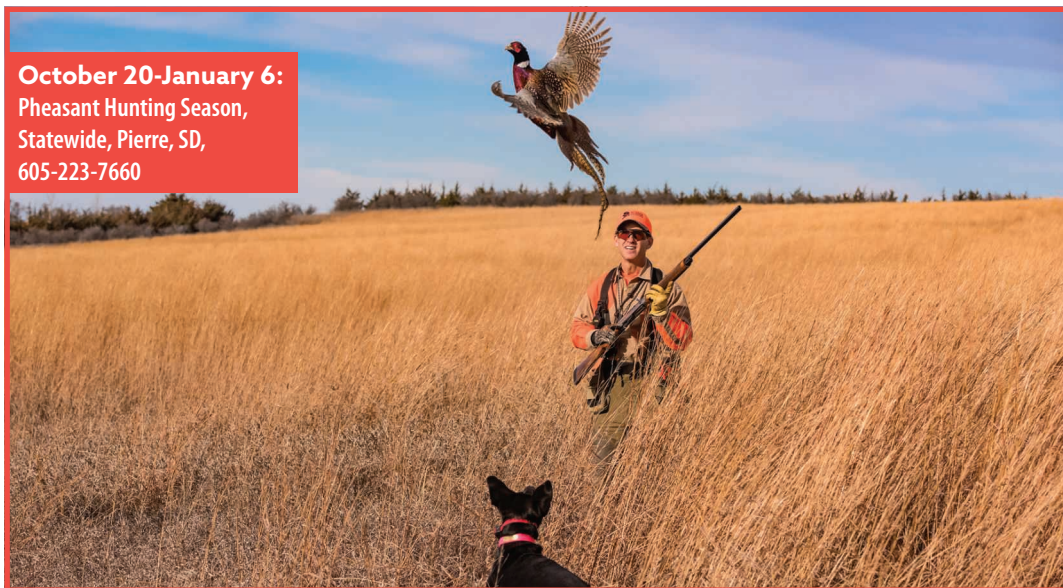


Photo courtesy: travelouthdaks.com

October 27-28

Dakota Territory Gun Show, Davison County 4-H Grounds, Mitchell, SD, 605-630-2199

November 1-3

South Dakota Local Foods Conference, Brookings, SD, Contact 605-681-6793 or SDSPAinfo@gmail.com

November 8-10

Ringneck Festival and Bird Dog Challenge, Huron, SD, 605-352-0000

November 9

Hairball, Deadwood Mountain Grand, Deadwood, SD, 605-559-1188

November 10

MVP Vendor and Craft Show, 9 a.m. to 3 p.m., James Valley Community Center, Mitchell, SD

November 10

Holiday Shopping Extravaganza, 10 a.m. to 4 p.m., Davison County Fairgrounds, Mitchell, SD, Contact Cindy Foster at 605-996-8563

November 10

Sisseton Area Merchants and Crafters 21st Annual Holiday Extravaganza, Sisseton, SD, 605-698-7425

November 10

Mountain West Beer Fest, Rapid City, SD, 605-343-6161

November 11

Trinity Lutheran Church Lutefisk, Lefse and Meatball Supper, 4 to 7 p.m., Chamberlain, SD, Contact Jeff Tveit at 605-730-0553

November 15-December 18

Black Hills Christmas Tree Permit Season, Custer, SD, 605-673-9200

November 16-17

Holiday Arts Christmas Craft Show, Masonic Temple, Mitchell, SD, 605-359-2049

November 17-18

Winterfest, Aberdeen, SD, artscouncil@nvc.net

November 20-December 26

Christmas at the Capitol, Pierre, SD, 605-773-3178

November 23-24, Dec. 1-2, 8-9, 15-16, 22-23

1880 Train Holiday Express, Hill City, SD, 605-574-2222

November 29-30

Festival of Trees, Lead, SD, 605-584-2067

December 1

Christmas Stroll and Holidazzle Parade, Spearfish, SD, 605-717-9294

December 1-2

Living Christmas Tree, Aberdeen, SD, 605-229-6349

To have your event listed on this page, send complete information, including date, event, place and contact to your local electric cooperative. Include your name, address and daytime telephone number. Information must be submitted at least eight weeks prior to your event. Please call ahead to confirm date, time and location of event.